



# A Bibliometric Analysis Concerning Local Ecological Knowledge on Elasmobranchs and Chimaeras

Marina Custodio Nascimento<sup>1,2\*</sup>, Sérgio Ricardo Santos<sup>1,3</sup> Marcelo Vianna<sup>1,2,3</sup>

## ABSTRACT

The absence of historical data on endangered species poses a conservation and socio-environmental problem. Approximately one-third of all Elasmobranchs and Chimaeras are under some level of threat of extinction, with knowledge gaps for many species. This research aims to conduct a bibliometric analysis of scientific production concerning Local Ecological Knowledge (LEK) of Elasmobranchs and Chimaeras. Searches on the subject were carried out at the SciELO, Scopus and Web of Science databases. The retrieved publications were assessed and sorted by a list of inclusion criteria, totaling 120 articles. The findings indicate that studies on LEK applied to Chondrichthyes assessments have recently gained relevance. The studies were published in a wide variety of journals and by researchers from different countries. Most research focused on marine ecosystems and interviewed professional fishers. Of the 179 Elasmobranchs species studied, most are large sharks with conspicuous diagnostic characters, such as *Galeocerdo cuvier*, *Isurus oxyrinchus* and *Sphyrna lewini*, mainly in publications focused on fisheries. Studies addressing ethnoknowledge as a historical data collection source are undoubtedly paramount, and the need for further investments in this research field in countries with scarce data addressing other actors, themes and scarcely studied taxa, is clear.

**Keywords:** Ethnoichthyology; Folk knowledge; Cartilaginous fish; Bibliographic review.

1 Laboratório de Biologia e Tecnologia Pesqueira, Universidade Federal do Rio de Janeiro, Av. Carlos Chagas Filho, 373 – Sala A0-040, Bloco A, Centro de Ciências da Saúde, CEP: 21941-902, Ilha do Fundão, Rio de Janeiro, Brazil.

2 Programa de Pós-Graduação em Ecologia, Departamento de Ecologia, Universidade Federal do Rio de Janeiro, Rio de Janeiro, CEP: 21941-590, Brazil.

3 Instituto Museu Aquário Marinho do Rio de Janeiro – IMAM/ AquaRio, Praça Muhammad Ali, Gamboa, Rio de Janeiro, CEP: 20220-360, Brazil.

\* Corresponding author ✉. E-mail address: MCN ([marinacn@id.uff.br](mailto:marinacn@id.uff.br)), SRS ([srbs.ufrj@gmail.com](mailto:srbs.ufrj@gmail.com)), MV ([mvianna@biologia.ufrj.br](mailto:mvianna@biologia.ufrj.br))

## SIGNIFICANCE STATEMENT

Chondrichthyes are a group of fish that chronically suffer from data absence, directly interfering with the understanding of their life history and conservation. We conducted searches in the main indexes of scientific articles regarding Local Ecological Knowledge focused on Elasmobranchs and Chimaeras. We found that the quantity of publications has grown in the last decade, with a significant number of studies conducted in Brazil. However, most of the identified publications had fishers as their primary source, focusing on aspects related to catch data and composition, especially those with conspicuous characteristics. We emphasize the importance of research involving other local actors, addressing topics related to biology, conservation, and the relationships established between humans and Chondrichthyes. The study provides a clearer picture of the knowledge gaps still faced in Elasmobranchs and Chimaeras research, where ethnoknowledge can offer an important contribution to the reconstitution of past information.

## INTRODUCTION

Absence of historical data for threatened and fished species constitutes a large-scale environmental problem. In this regard, access to anecdotal, historical, and multicultural records has become a valuable tool in recovering the ecological history of several taxonomic groups, such as corals, groupers, cetaceans, and elasmobranchs (Ferretti *et al.* 2008; Fogliarini *et al.* 2022; Martínez-Candelas *et al.* 2020; McClenachan *et al.* 2012; Santos *et al.* 2022). This has altered societal perceptions of biological and ecological species aspects and may aid in future conservation decision-making (Ferretti *et al.* 2008; Fogliarini *et al.* 2022; McClenachan *et al.* 2012). In this context, Local Ecological Knowledge (LEK), comprising a set or system of theoretical and practical knowledge based on environmental observations and experimentations is an alternative source of information (Berkes *et al.* 2000; Ruddle 2000) and a way to access historical narratives (Burns *et al.* 2020; McClenachan *et al.* 2012).

Ethnoichthyology, “from the Greek ‘ethno’, race or people + ‘ichthys’, fish + ‘logos’, discourse, study” (Marques 2012) is the field that studies the Local Ecological Knowledge (LEK) associated with fishes and their many uses (Bahuchet 1992). Although this term has been employed by researchers since the late 1960s, this field of knowledge is still neglected by science (Albuquerque *et al.* 2021; McClenachan *et al.* 2012; Narchi *et al.* 2014). Despite this, research has revealed the potential of this field in contributing to the theoretical and practical advancement of biology and related areas, such as anthropology, during their implementation, providing an overview of interactions between fauna and different human groups (Albuquerque *et al.* 2021; Pinto *et al.* 2018; Ruddle 2000; Silvano and Valbo-Jørgensen 2008).

The class Chondrichthyes comprises sharks and rays (Subclass Elasmobranchii) and chimeras (Subclass Holocephali), an evolutionarily successful fish group (Dulvy *et al.* 2021; Stein *et al.* 2018). Representatives belonging to this class display a variety of body and behavioral patterns, are globally distributed throughout many aquatic environments, and play important ecological roles in maintaining ecosystems (Ebert *et al.* 2021; Ferretti *et al.* 2008; Sherman *et al.* 2023). Most sharks, rays and chimeras display intrinsic characteristics, such as slow growth rates, late sexual maturation, and low fecundity (Dulvy *et al.* 2017; Lucifora *et al.* 2022) which added to the chronic threats directed at this group, such as overfishing, habitat degradation and pollution, contributing to their decline (Dulvy *et al.* 2017; Lucifora *et al.* 2022). It is, in fact, currently estimated that about 33% of Chondrichthyes are at risk of extinction (Dulvy *et al.* 2021; Sherman *et al.* 2023; Stein

*et al.* 2018).

Knowledge synthesis studies have been carried out focusing on Elasmobranchs and Chimaeras, highlighting a significant lack of data and the need for new techniques and methodologies to study the species belonging to this taxon (*e.g.*, Moura and Vianna 2020), emphasizing LEK research (Becerril-García *et al.* 2022; Cashion *et al.* 2019; Coelho *et al.* 2021; Jørgensen *et al.* 2022). Considering human and Chondrichthyes interactions, access to LEK information becomes a valuable source of historical data and reveals the importance of this taxon in human relationships (Bastari *et al.* 2022; Mojetta *et al.* 2018). Furthermore, access to these data reinforces their importance, especially in countries with limited research resources and investments, which is clearly demonstrated by knowledge gaps for several species (Blanco-Parra *et al.* 2022; Ruddle, 2000; Seidu *et al.* 2022).

Bibliometric research plays an important role in providing an overview of the state of knowledge of a certain subject, identifying patterns, trends, gaps and indicating directions for future studies (Albuquerque *et al.* 2013; Alves *et al.* 2018; Moura and Vianna 2020; Santos and Vianna 2017; Souza and Vianna 2020). To this end, a worldwide bibliometric analysis was conducted on LEK focused on Chondrichthyes species, aiming to answer the following questions: (i) what is the temporal trend concerning LEK publications focused on Chondrichthyes species?, (ii) where was this research been developed?, (iii) which are the most representative taxonomic groups reported in these surveys? and (iv) what topics have been addressed by these surveys?

## MATERIAL AND METHODS

### Data collection

Searches were carried out at the following databases: SciELO, which indexes articles published in regional Latin American journals (Souza and Vianna 2020); Scopus, which covers more than 16,000 publications (Martín-Martín *et al.* 2018; Vieira and Gomes 2009), and Web of Science, considered the most complete scientific literature database, indexing publications from 1945 to the present (Santos and Vianna 2017; Souza and Vianna 2020). The research period was set from 1945 to October 10, 2022.

The searches were carried out in the “Topics” section, which covers titles, abstracts, and keywords. The choice of keywords and Boolean operators followed Moura and Vianna (2020), where two search fields joined by the “AND” operator were used in the article searches. The symbols “\*” and “\$” contemplate variations of up to one letter, and the second, of more than one letter. The symbols “\$” and “\*” were used

to guarantee the variety of spellings that the compiled terms may present. The first search field refers to the knowledge area, comprising the string “ethno\*” OR “ecological knowledge” OR “local knowledge” OR “traditional knowledge” OR “fish\* knowledge” OR “folk knowledge” OR “interview”. The second concerns Chondrichthyes, set as “chondricht\*” OR “elasmobran\*” OR “shark\$” OR “ray\$” OR “stingray\$” OR “skate\$” OR “holoceph\*” OR “chimaerifor\*” OR “chimaera\$”. All keywords were also translated into Portuguese and Spanish. A third search parameter comprising the keywords “ethnology” OR “x-ray”, joined by the operators “NOT” or “AND NOT”, was added in order to exclude publications from unrelated topics.

For the SciELO database, the keywords applied to the three search fields were used separately (*i.e.*, “ethno\* AND shark\*” AND NOT “ethnology”), due to the simplicity of the platform’s search algorithm and the size of the database, which does not retrieve publications when applying complex word combinations (Souza and Vianna 2020).

## Data analysis

Article inclusion criteria were set as follows: (i) interviews as one of the applied methodologies; (ii) focus on one or more Elasmobranchs and Chimaeras species, describing their taxonomic level (order, family, genus and/or species); and (iii) availability in Portuguese, English or Spanish.

After screening, the retrieved articles were compiled in a database and were classified according to title, author(s), publication year, journal, database, language, study area, presence/absence of protected area, human group(s) (Table 1), ecosystem (fresh-

water, estuarine, marine), taxonomy (order, family, genus, and species), focus on Chondrichthyes, conservation status (IUCN), and addressed topic(s) (Table 2). The titles, abstracts, methodologies, and results sections were evaluated for data retrieval. Only data obtained from interview methodology results were considered.

Taxonomic corrections for family, genus, and species were applied according to the Eschmeyer Catalog of Fishes (last updated on 11 January 2023), Gomes *et al.* (2019) for orders occurring in Brazil, and Nelson *et al.* (2016) for orders with no records in Brazil. Furthermore, regarding preliminary taxonomic identification of species (*confer*, “*cf.*”), the species mentioned by the authors were considered in our study. For groupings of species with two epithets, separated by the symbol “/”, only the genus was considered.

The data were compiled in a spreadsheet editor program, synthesized, and presented in the form of graphs generated by the R software (R Core Team, 2023), using the “ggplot2” and “piedonut” packages. The distribution map of total publications by country was generated using the Quantum GIS Software (QGIS 3.10.11), with the shapefile format obtained from Eurostat (2023). The species taxonomy graph was generated in Microsoft Excel. A weighting was performed to enable comparative analysis for the determination of human groups, ecosystems, themes, sub-themes, and taxonomic groups, assigning a greater proportional weight according to the number of human groups, ecosystems, themes, sub-themes, and taxonomic groups studied in each evaluated article.

**Table 1.** Description of human groups referred to in Local Ecological Knowledge publications concerning the Class Chondrichthyes retrieved by this systematic review.

Human group	Description
Fishers	Subsistence and recreational fishers; boat owners; fishing associations; fish farmers; fish processors
Community	Members of local and/or traditional communities ( <i>i.e.</i> , fishing - except fishers-, coastal, riverside, indigenous); workers ( <i>i.e.</i> , farmers and rubber tappers)
Traders	Merchants ( <i>i.e.</i> , ice companies, middlepersons, pharmacies, restaurants, rooters, and establishment employees)
Divers	Recreational divers, professionals, and guides.
Researchers	College students and researchers
Government Agents	State agents
Health Agents	Health agents
Others	Religious persons; photographers; tourists; NGOs; conservationists; sick persons; volunteers; hunter/gatherers (of animals other than fish)

**Table 2.** Topics addressed in Local Ecological Knowledge publications concerning the Class Chondrichthyes retrieved by this systematic review.

Topics	Subtopics	
Biology	1. Diet	4. Habitat
	2. Reproduction	5. Taxonomy
	3. Behavior	6. Others
Fisheries	1. Fishing apparatus	5. Fishing impacts
	2. Fleet	6. Economy
	3. Fishers	7. Others
	4. Legislation	
Human Relationships	1. Food	4. Craftsmanship
	2. Medicinal	5. Others
	3. Religious	
Conservation	1. Legislation	2. Environmental changes

## RESULTS

### Bibliometrics

A total of 120 articles on LEK concerning Chondrichthyes species were retrieved from the three searched databases from 1945 to 2022. Article publication years were restricted from 1996 to 2022 (Figure 1; Additional File 1). The number of publications per year from 1996 to 2010 remained low, not exceeding three articles in 2007. Articles were published only 1996, 2000, 2007 and 2009, with gaps between 1997 and 1999, between 2001 and 2006 and 2008. From 2011 onwards, the number of publications increased, surpassing three publications per year, except in 2012, 2013 and 2015. A substantial increase in the number of publications is noted from 2016 onwards, with a peak of 19 articles observed in 2021.

Articles retrieved from the Scopus database covered most publications (n= 110; 92%), followed by the Web of Science, (n= 78; 65%), and SciELO (n= 3; 3%) databases. However, redundancies between the searched databases were noted, with three articles retrieved by all three databases, and 65 (54%) retrieved both in Scopus and Web of Science databases.

The retrieved articles were published in 56 different journals (Table 3). The *Aquatic Conservation and Marine and Freshwater Ecosystems* journal published the largest number of articles (n= 14; 12%), followed by *Marine Policy* (n= 12; 10%), and *Biological Conservation* (n= 6; 6%). It is noteworthy that, of the total number of journals observed in our review, only five focus on relationships between humans and other elements of nature, namely *Journal of Ethnobiology and Ethnomedicine* (n= 5), *Ethnobiology and Conser-*

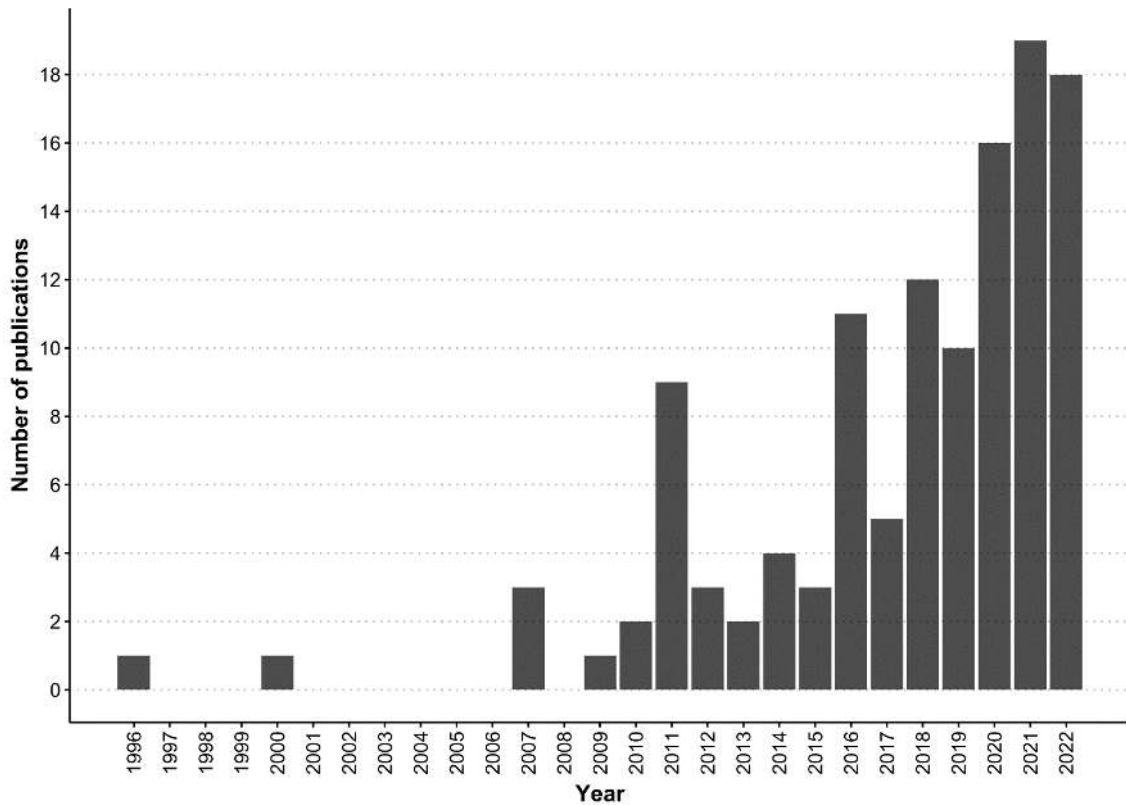
*vation* (n= 3), *Ethnobiology Letters* (n= 2), *Conservation and Society* and *Ecology and Society* (both with only one article). In addition, of the total number of retrieved articles, most (n= 117; 98%) were published in English, with only two (2%) articles published in Spanish and one (1%) in Portuguese.

### Geographic distribution

The retrieved articles were developed in 57 different countries (Figure 2), with Brazil ranking first (n= 27 articles; 22.5%), followed by Mexico (n= 9; 7.5%), Italy (n= 8; 6.7%) and Fiji (n= 7; 5.8%). The marine environment was the most addressed among the different aquatic environments, with 104 (87%) publications, followed by estuarine environments (n= 27; 23%), and freshwater (n= 13; 11%). Twenty of the studies (16%) were carried out in protected areas.

### Human groups

The most interviewed human groups were fishers, with 97 (56%) publications, followed by community members and traders, with 19 (11%) publications each, and divers with 15 (9%) publications. Although the “Others” category was noted in a high number of publications (n= 12; 7%) compared to other categories, such as Researchers (n= 6; 3%), Government (n= 2; 1%) and Health agents (n= 2; 1%), the groups that fit into this category present values equal to and/or lower than those concerning the Government and Health agent categories.



**Figure 1.** Annual distribution of publications on Local Ecological Knowledge, concerning Elasmobranchs and Chimaeras, species worldwide from 1996 to 2022.

**Table 3.** Top 10 journals in relation to the total number of published articles, on Local Ecological Knowledge, concerning Elasmobranchs and Chimaeras species retrieved by this systematic review.

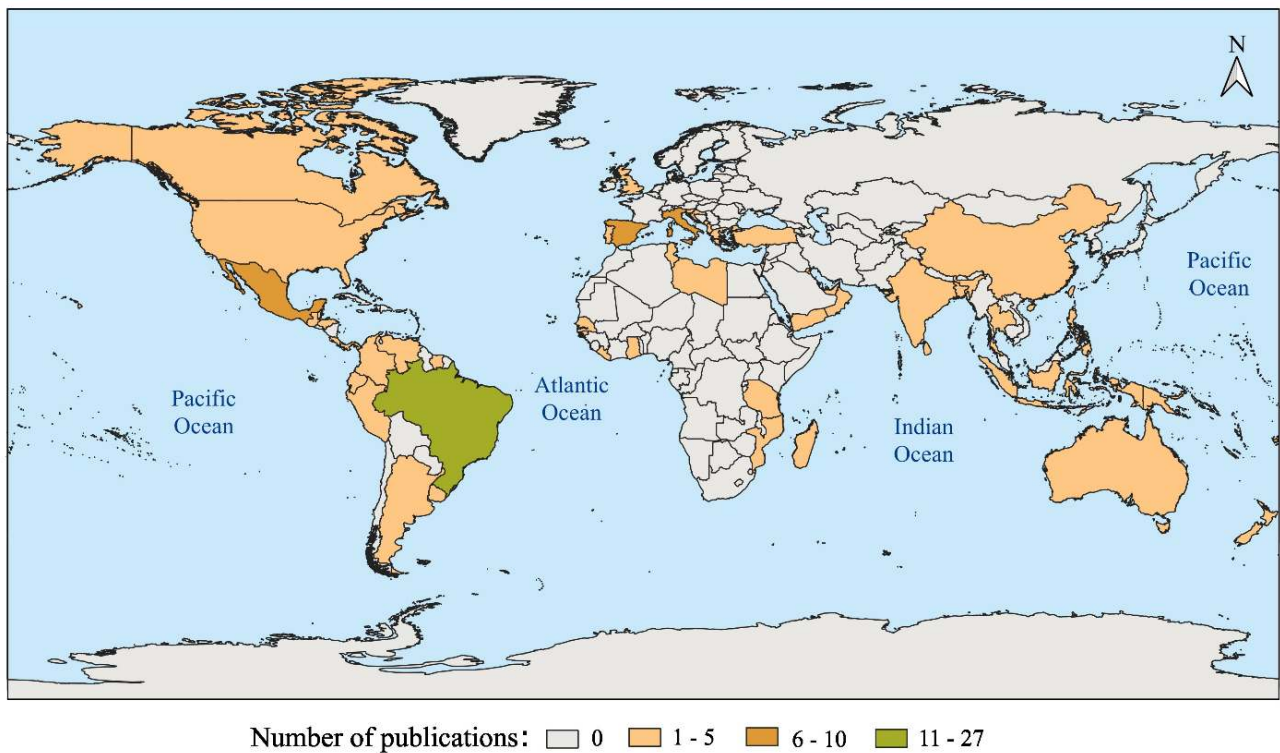
Journal	Total	%
<i>Aquatic Conservation: Marine and Freshwater Ecosystems</i>	14	12
<i>Marine Policy</i>	12	10
<i>Biological Conservation</i>	6	6
<i>Endangered Species Research</i>	5	5
<i>Journal of Ethnobiology and Ethnomedicine</i> *	5	5
<i>Ocean and Coastal Management</i>	5	5
<i>PLoS ONE</i>	5	5
<i>Frontiers in Marine Science</i>	4	5
<i>Conservation Science and Practice</i>	3	4
<i>Ethnobiology and Conservation</i> *	3	4

**Legend:** The symbol “\*” indicates journals related specifically to relationships between humans and other elements of nature.

## Species

A total of 179 species included in the Elasmobranchii were mentioned by the retrieved articles

(Table 4). Out of the 120 publications found, the majority (n= 93; 77.5%) focused on Elasmobranchs. The three most studied species were *Galeocerdo cuvier* (tiger shark) in 24 (20%) publications, *Isurus*



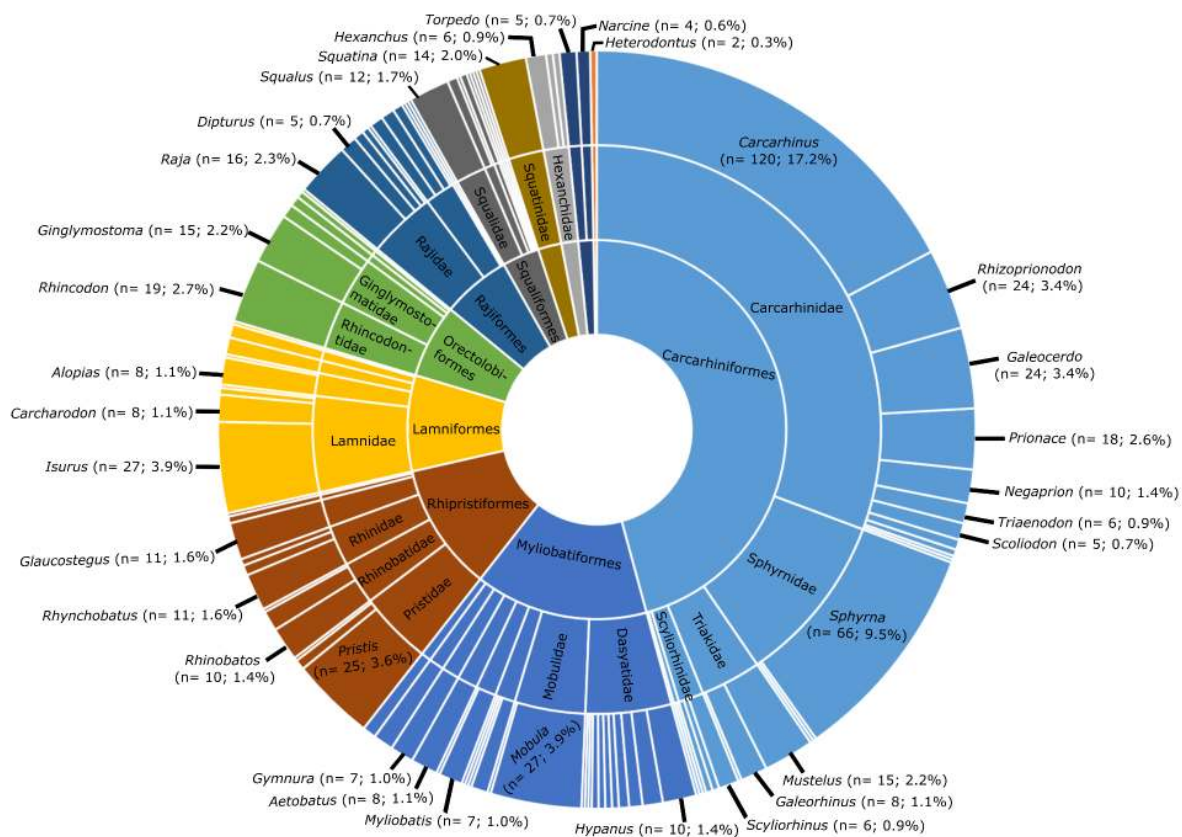
**Figure 2.** Geographical distribution of publications concerning, Local Ecological Knowledge, on Elasmobranchs and Chimaeras by country retrieved by this systematic review.

*oxyrinchus* (shortfin mako) and *Sphyrna lewini* (scalloped hammerhead), comprising 23 (19%) publications each. A total of 11 orders, 44 families and 87 genera Elasmobranchii were studied (Figure 3).

The most studied order was Carcharhiniformes, with 70 articles (corresponding to 45.8% of the elasmobranchs studied). The most studied family was Carcharhinidae (n= 60; 30.8% of the elasmobranchs), and

**Table 4.** List of the 10 Elasmobranchs species most cited by publications addressing, Local Ecological Knowledge, retrieved by this systematic review. Classification according to the IUCN Threat Status Categories (2022). CR: Critically endangered; EN: Endangered; VU: Vulnerable; DD: Data Deficient.

Species	Mentions	IUCN
<i>Galeocerdo cuvier</i> (tiger shark)	24	NT
<i>Isurus oxyrinchus</i> (shortfin mako)	23	EN
<i>Sphyrna lewini</i> (scalloped hammerhead)	23	CR
<i>Carcharhinus leucas</i> (bull shark)	20	VU
<i>Rhincodon typus</i> (whale shark)	19	EM
<i>Prionace glauca</i> (blue shark)	18	NT
<i>Carcharhinus limbatus</i> (blacktip shark)	17	VU
<i>Ginglymostoma cirratum</i> (nurse shark)	15	VU
<i>Carcharhinus falciformis</i> (silky shark)	12	VU
<i>Pristis pristis</i> (common sawfish)	12	CR



**Figure 3.** Orders, families, and genera mentioned by publications addressing, Local Ecological Knowledge, on Elasmobranchs retrieved by this systematic review.

the most cited genera, *Carcharhinus* and *Sphyrna*, both mentioned in 46 articles (corresponding to 17.2% and 9.5% of studied taxa). A total of 51 articles restricted information to the genera level, 16 to family and three to order. No articles mentioned the Holocephali subclass.

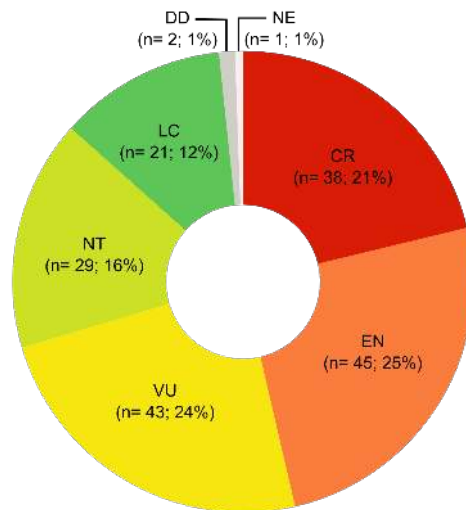
The 10 most cited species are included in three threat categories — Vulnerable (VU), Endangered (EN) and Critically endangered (CR) —, except for *Galeocerdo cuvier*, which is considered Near Threatened (NT) (Table 4). In the overall picture, of the 179 species mentioned in the articles, 126 (70%) are included in some threat category (Figure 5). No Extinct (EX) and Extinct in the Wild (EW) species were mentioned, and only *Potamotrygon boesemani* is not categorized by the IUCN due to lack of data.

### Thematic areas

The retrieved publications addressed different topics within four main themes, namely Biology, Conservation, Fisheries and Human Relations (Figure 5). Both themes and subtopics presented results classified in more than one category. The most discussed

topic was Fishing, with 88 (30%) publications. Data on fishing gear was the most mentioned among the subtopics related to this area, noted in 78 (30%) publications, followed by economy, 49 (19%) and fisheries impacts, 34 (13%).

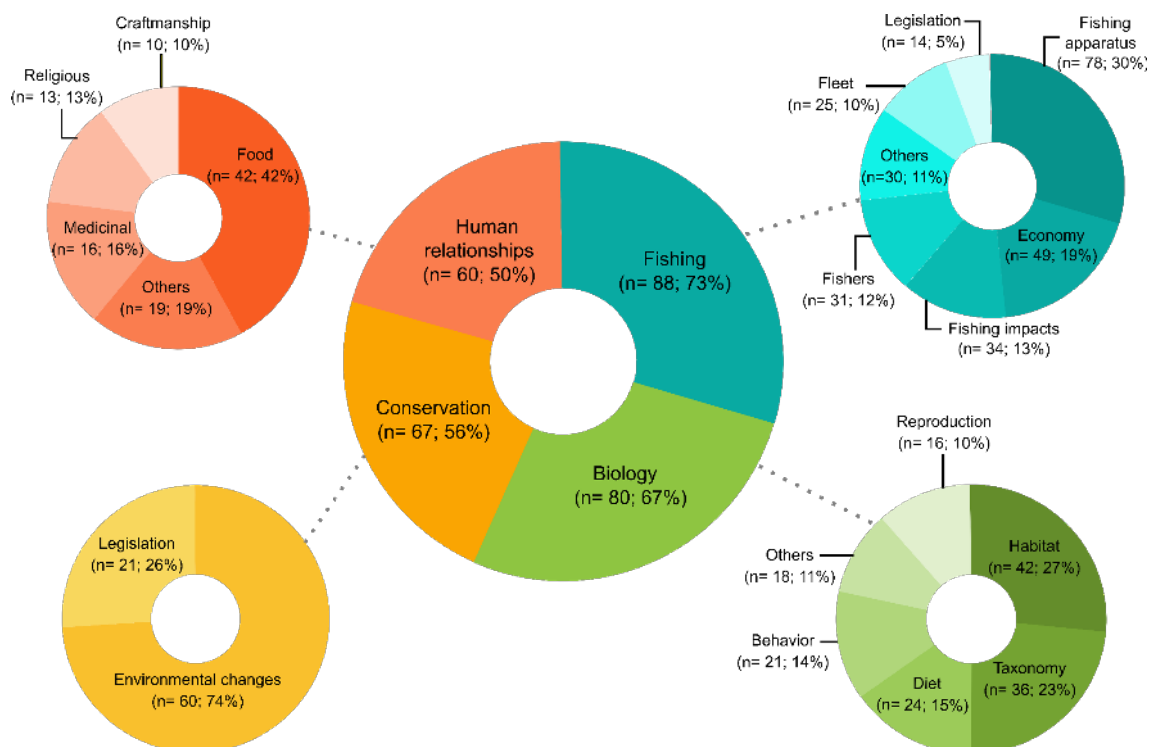
Information on biology aspects of mentioned species ranked as the second most cited topic, comprising 80 (27%) publications. Species habitat was the most discussed subtopic, present in 42 (27%) publications, followed by ethnotaxonomy ( $n=37$ ; 23%), food ( $n=24$ ; 15%), and behavior ( $n=21$ ; 13%). Regarding conservation, 67 (23%) articles were identified, with environmental changes comprising the most discussed sub-theme, reported in 60 (74%) publications, followed by management and legislation ( $n=21$ ; 26%). Other human relationships, excluding fishing, were addressed in 60 (20%) publications, with human food being the most cited subtopic, ( $n=42$ ; 42%) articles, followed by other subtopics ( $n=19$ ; 19%), and medicinal uses ( $n=16$ ; 16%).



**Figure 4.** Percentage of total species found through Local Ecological Knowledge for Elasmobranchs, by IUCN threat category, retrieved in this bibliometric review. Legend: NE - Not Evaluated; DD - Data Deficient; LC - Least Concern; NT - Near Threatened; VU - Vulnerable; EN - Endangered; CR - Critically Endangered.

The results indicate that studies employing LEK to investigate sharks and rays has only gained relevance very recently. These surveys have been published in a wide variety of journals and were conducted in different countries. The studies mostly focus on the marine environment and the interviewed public gen-

erally comprises professional fishers. Many species are cited, but most are large sharks with conspicuous diagnostic characters, with a recurring fishing theme.



**Figure 5.** Topics addressed by publications, on Local Ecological Knowledge, on Elasmobranchs retrieved by this systematic review.

## DISCUSSION

### Bibliometrics

The bibliometric analysis carried out herein indicates a slow but steady increase in publications focused on LEK regarding Chondrichthyes, restricted, however, only to the Elasmobranchii Subclass, in comparison to the general scientific production observed for this group (Oliveira *et al.* 2023). This increase was noted mainly in the last decade, a reflection on the increasing number of articles published in the ethnozoology field (Albuquerque *et al.* 2013; Alves *et al.* 2018), and consequently in its subareas, such as ethnoichthyology, which has been accompanying this growth (Ladislau *et al.* 2021; Lyra-Neves *et al.* 2015).

Compared to other ethnobiology areas, ethnozoology and its sub-area ethnoichthyology are recent study fields. The term ethnoichthyology was employed for the first time in 1967 (Morris 1967). The field was then finally established in the 1990s, when a significant increase in the number of publications focused on ethnobiology was noted, mainly concerning ethnozoology, added to research training diversification on the subject (Alves *et al.* 2018; Aswani *et al.* 2018; Marques 2012). However, according to our data, the increasing assessments in the ethnoichthyology field focusing on Chondrichthyes is even more recent, taking place only after 2016.

Despite the number of articles retrieved in this review, it is important to emphasize that this research does not consider all existing publications, as the applied methods and criteria to search for publications on LEK focusing on Chondrichthyes are limited. Furthermore, although an overlap was noted for the Web of Science and Scopus databases, both do not cover a variety of journals, especially those related to multidisciplinary areas and/or to society (Halevi *et al.* 2017; Martín-Martín *et al.* 2018), restricting most publications to the English language (Halevi *et al.* 2017; Martín-Martín *et al.* 2018; Smith *et al.* 2021). In addition, many ethnozoology articles were published in journals with low impact factors or not indexed and related to other biology fields (Gutiérrez-Santillán *et al.* 2019; Lyra-Neves *et al.* 2015), making article retrieval difficult when applying the search criteria employed herein.

The number of publications retrieved in this systematic review certainly reflects environmental and sociocultural issues that have taken place over the last few years in several countries, leading to LEK losses, either due to the difficulty in interacting with LEK resources, abundance decreases, or departure of people from professions and/or communities (Alves and Nishida 2003; Pinto *et al.* 2018; Svanberg and Locker 2020). Furthermore, the inherent difficulty in obtain-

ing quality data due to the lack of trust established between interviewees and researchers must also be considered (Alves and Souto 2011). This mistrust situation can be aggravated by legislations that restrict and apply penalties to those who use Chondrichthyes resources, especially endangered species (*e.g.*, Lyra-Neves *et al.* 2015), which is the case of most Elasmobranchs and Chimaeras species.

### Geographic distribution

Research on LEK concerning Elasmobranchs has been carried out in several countries displaying multiple sociocultural and economic realities. Several factors may contribute to lesser or greater research in the ethnoichthyology field, such as the faunal diversity and variety of social actors that use these resources (Alves *et al.* 2018; Nunes *et al.* 2021), the absence or scarcity of past fisheries and species biology data (Jorgensen *et al.* 2022; Santana-Morales *et al.* 2020; Skubel *et al.* 2019), and public investment in higher education and research institutions (Albuquerque *et al.* 2013; Alves and Souto 2011; Alves *et al.* 2018; Shiffman *et al.* 2020). In this regard, Becerril-García *et al.* (2022) carried out interviews with specialists on the future perspectives of Chondrichthyes research and demonstrated that, for 90% of the interviewees, the main factor that affects the progress of scientific production in Latin America compared to the global context is lack of funding. However, despite fitting into all these factors, Brazil ranked first concerning publications focused on elasmobranch ethnoknowledge, corroborating the country's international recognition for scientific ethnozoology and elasmobranch production (Alves *et al.* 2018; Lyra-Neves *et al.* 2015; Shiffman *et al.* 2020) and demonstrating that Brazilian researchers use ethnoichthyology as a low-cost tool to retrieve fisheries data based on traditional knowledge, as a way to compensate for the absence of official historical series, the low funding and baseline data.

Despite what was observed for Brazil, and although research in ethnoichthyology is being developed in other countries, publications are still scarce, and several authors increasingly emphasized the need to intensify studies in this area, given the importance of fishing and fish in various forms of cultural manifestations, the absence of historical data associated to their use and the significant knowledge gaps on species biology and ecology. This has been noted for some American countries, except for Brazil (Alves *et al.* 2018; Aswani *et al.* 2018), as well Europe (Alves *et al.* 2018; Ferretti *et al.* 2008; Svanberg and Locker 2020); Africa (Aswani *et al.* 2018; Seidu *et al.* 2022), Asia (Alves *et al.* 2018; Haque *et al.* 2021) and Oceania (Alves *et al.* 2018). It is also important to note the

increasing number of publications and countries, most considered “developed”, which have been producing research focused on other knowledge areas concerning elasmobranchs (Oliveira *et al.* 2023).

Our results when evaluating ethnoichthyology in a broad manner indicate that most research was carried out in marine ecosystems, as reported by Ladislau *et al.* (2021). This reflects the number of Elasmobranchs and Chimaeras species that occur in these environments, as most species are exclusively marine, although part of part of their life cycles may take place in estuarine environments (Ebert *et al.* 2021; Gomes *et al.* 2019), with the exception of some stingrays (Potamotrygonidae), restricted to freshwater (Lucifora *et al.* 2022; Rosa *et al.* 2008), *Carcharhinus leucas* (Heupel and Simpfendorfer 2007) and *Pristis pristis* (López-Angarita *et al.* 2021; Whitty *et al.* 2017), which can be found in estuarine and eventually freshwater environments. However, few of the articles retrieved here focused on freshwater environments. According to Junqueira *et al.* (2020), research in this area is costly, requires long travel times (sometimes with access only by waterways) and present difficulties in communication and in material transport. This makes the low knowledge production on freshwater elasmobranchs worrying, due to late sexual maturation, low fertility, high endemism, and territorial restrictions (Abell *et al.* 2008; Dulvy *et al.* 2017; Lucifora *et al.* 2019, 2022). Furthermore, general elasmobranch threats (overfishing, habitat loss, urbanization, pollution, among others) are more significant for freshwater elasmobranchs, mainly tropical and subtropical species (Barrowclift *et al.* 2023; Lucifora *et al.* 2019). This accounts for most data deficient elasmobranchs as classified by the IUCN occurring in freshwater (Dulvy *et al.* 2017).

Although few articles have been conducted in protected areas, studies indicate that these areas are important for elasmobranch conservation (Jorgensen *et al.* 2022; Shiffman *et al.* 2020), and may favor ethnozoology studies (Alves *et al.* 2018). Certain conservation unit types, however, such as Marine Protected Areas, are under fishing restrictions (Jorgensen *et al.* 2022; Sabadin *et al.* 2022), which may be associated to conflicts of interest between conservation and exploitation, directly influencing the willingness of fishers to collaborate in interviews and, consequently, making research difficult (Alves and Souto 2011).

## Human groups

Fishers were the most approached group concerning elasmobranch research. In fact, the traditional empirical knowledge of this group has been applied for years to obtain and complement biological and ecolog-

ical data, in addition to accessing temporal abundance trends and serving as a basis for management strategies (Bastari *et al.* 2022; Giglio and Bornatowski 2016; Sáenz-Arroyo and Revollo-Fernández 2016; Santos *et al.* 2022; Silvano and Valbo-Jorgensen 2008), as fisher knowledge is a result of the proximity and regularity of fish interactions (García-Quijano and Pitchon 2010; Marques 2012; Pinto *et al.* 2018). As noted by Ladislau *et al.* (2021), although fisher knowledge is paramount in ethnoichthyology studies, other actors should be included in this line of research, in order to access the knowledge and perceptions of other actors who interact with ichthyofauna as much as fishers (Pinto *et al.* 2018; Skubel *et al.* 2019). Several examples illustrate how other social groups can contribute to a better understanding of the dynamics that encompass people-fish relationships. For example, Nunes *et al.* (2021), in Brazil, indicate that women who work in fish processing may possess knowledge on fish diet and reproduction aspects. In another study, Lopes *et al.* (2021) demonstrated temporal changes in the stocks of several fish species by interviewing family nuclei in fishing communities in São Paulo, Rio de Janeiro and Santa Catarina (Brazil) and divers interviewed by Blanco-Parra *et al.* (2022) in Mexico, demonstrated elasmobranch abundance declines.

## Species

Several biology and morphology aspects explain why some elasmobranch species were mentioned more than others, such as (i) wide geographic distribution, (ii) importance in fish fishery (*e.g.*, *Galeocerdo cuvier*, *Isurus oxyrinchus*, *Sphyrna lewini*), (iii) habitat diversity, *i.e.*, estuaries, rivers and lakes (*Carcharhinus leucas* and *Pristis pristis*), (iv) large body size, ranging in total length from 2.4 m (*Ginglymostoma cirratum*) up to 20 m (*Rhincodon typus*), (v) conspicuous morphological features such as rostrum (*P. pristis*), cephalofoil (*S. lewini*), barbells (*G. cirratum*), dorsal mottling patterns (*G. cuvier*, *R. typus*, *C. limbatus*) and (vi) the sum of several traits (*e.g.*, *G. cuvier*, *I. oxyrinchus*, *S. lewini*) (Ebert *et al.* 2021; Gomes *et al.* 2019; Oliveira *et al.* 2023; Shiffman *et al.* 2020).

Carcharhiniformes is the largest shark order, comprising 10 families and about 291 species (Ebert *et al.* 2021; Gomes *et al.* 2019), which explains the higher number of citations for this order in the retrieved articles. However, even though the Carcharhinidae family and *Carcharhinus* and *Sphyrna* genera were the most cited, they are not the most numerous species among sharks (Ebert *et al.* 2021; Gomes *et al.* 2019). They include however, taxa with wide geographic distributions, close to the coast, are found in different environments, are large and display striking morphological characteristics (Ebert *et al.* 2021; Gomes *et*

al. 2019; Oliveira *et al.* 2023). Furthermore, the variety and intensity of the ways in which elasmobranchs interact with humans also comprise a crucial factor in generating knowledge on this group. In addition to fishing, these species can also interact with people during recreational activities (Blanco-Parra *et al.* 2022; Cisneros-Montemayor *et al.* 2020) through injuries and accidents (Chapman and McPhee 2016; Silva *et al.* 2020; Katzer *et al.* 2022), by feeding (Davidson *et al.* 2016; Giglio *et al.* 2018) and through culture and/or religion expressions (Grant *et al.* 2021; Leeney and Poncelet 2015; Stacey *et al.* 2012; Torrente *et al.* 2018; Valerio-Vargas and Espinoza 2019). New knowledge and perceptions about species are, in fact, formed from these different forms of interaction.

Among the species mentioned in the publications retrieved by this systematic review, 126 (70%) are included in endangered categories (VU, EN, CR). If we consider that the two species classified as Data Deficient (DD) also mentioned in the publications are in fact threatened (Dulvy *et al.* 2021), the number of endangered species increases to 128 (72%). Therefore, ethnoichthyology also comprises a valuable way to generate data to support assessments on extinction threats in elasmobranchs, as about 33% of all Elasmobranchs and Chimaeras species are included in some threat category, according to IUCN assessments (Dulvy *et al.* 2021, Leduc *et al.* 2021; Oliveira *et al.* 2023). Only *Potamotrygon boesemani* is not categorized, probably due to its small occurrence area (Rosa *et al.* 2008), which, coupled to logistical factors, can restrict biology and ecology assessments for this species.

Despite the high number of publications retrieved herein and the reported diversity of fishing gear and fishing modes, no Chimaeras species were mentioned. One research effort has been, in fact, carried out by Baremore *et al.* (2021) with fishers from Mexico, Belize, Guatemala and Honduras, using photographs and popular names (Additional File 1) to gather data on *Neoharriotta carri* (Dwarf sicklefin chimera). The main reason for the absence of mentions for these members is probably related to biological aspects, such as low frequency and deep-water occurrence (Didier *et al.* 2012). Holocephalans, however, are known to interact with fishing, although infrequently, and species can be grouped upon landing along with shark species, due to generalizations concerning their external morphology, termed generically as dogfish or cação, as shark meat is called in many countries, or even discarded, losing this information (Di Dario *et al.* 2011; Didier *et al.* 2012; Santana-Morales *et al.* 2020).

## Thematic areas

Ethnoichthyology is a multidisciplinary knowledge area (Alves *et al.* 2018; Marques 2012; Narchi *et al.* 2014) focusing on various topics. The first forms of interaction between people and elasmobranchs were and still are through fishing by groups that live close to aquatic environments (Lopes *et al.* 2016; Mojetta *et al.* 2018; Pinto *et al.* 2018). This justifies the predominance of fishing as the most addressed topic, as it comprises a primary and regular source of interaction (Berkes *et al.* 2000; García-Quijano and Pitchon 2010). In addition, fishing demonstrates its importance and produces knowledge not only through labor activity, but also through traditional people identity and culture maintenance (Skubel *et al.* 2019).

Contrary to what was observed by Ladislau *et al.* (2021) on ethnoichthyology research on teleosts, biology-related aspects were the second major topic most discussed in the retrieved publications ( $n=80$ ; 27%). Research on fish biology LEK has been compared with “conventional science” data for years (e.g., Albuquerque *et al.* 2021; Silvano and Begossi, 2012). Based on these studies, the scientific community currently recognizes the importance of their contribution to the generation and complementation of data concerning food (Begossi *et al.* 2016; Freitas *et al.* 2021; Silva *et al.* 2021), reproduction (Giglio and Bornatowski 2016; Irigoyen and Trobbiani 2016; Serra-Pereira *et al.* 2014), habitat (Begossi *et al.* 2016; López-Angarita *et al.* 2021; Rasalato *et al.* 2010), behavior (Barbato *et al.* 2021; Barbosa-Filho *et al.* 2014) and temporal trends concerning size, abundance and distribution variations (Bastari *et al.* 2022; Fogliarini *et al.* 2021; Giglio and Bornatowski 2016; Santos *et al.* 2022; Seidu *et al.* 2022), among others (Pinto *et al.* 2018; Ruddle, 2000), corroborating the relevance of employing ethnoichthyology in academic research.

Elasmobranch use as human food is noteworthy among the themes addressed by human-elasmobranch relationships in the retrieved publications. In fact, sharks and rays are a dietary component in several coastal and/or developing countries, mainly due to the guarantee of food security in its broad spectrum, which includes protein provision, with fish considered a healthy food and generating income from commercialization, allowing for the purchase of other food inputs and the settlement of other expenses (Davidson *et al.* 2016; Dulvy *et al.* 2017; Giglio *et al.* 2018; Skubel *et al.* 2019). In addition to the value of these animals as a food and income source, elasmobranchs are also important in therapeutic and religious uses, through their consumption and/or topical use of animal parts or by-products. For example, teeth or parts of sharks are used as a medical tool and for cultural

purposes, as noted by Rasalato *et al.* (2010) for Fiji and Leeney and Poncelet (2015) for Guinea-Bissau, while the head of *Pristis pristis* is used in the prevention of headaches, baldness and its teeth to obtain calcium and in the preparation of energy drinks in Costa Rica (Valerio-Vargas and Espinoza 2019). Several species of sharks and rays are employed by fishing communities due to their antiasthmatic and anti-inflammatory potential, and for cholesterol control, among others (e.g., Tocantins, Brazil, Begossi and Braga 1992; Península de Paria, Venezuela, Fariña-Pestano *et al.* 2011). In contrast, records of permanent or periodic restrictions on the consumption of these animals are associated to health maintenance, for example, for injured people, pregnant women and women in the puerperium, among other conditions (Begossi *et al.* 2004; Grant *et al.* 2021; Ramires *et al.* 2012). These uses highlight the sociocultural relevance of elasmobranchs for coastal and riverside communities, who also use these animals for tourism (Cisneros-Montemayor *et al.* 2020), for ethnic group identification through totem poles and/or scarification (Grant *et al.* 2021; Torrente *et al.* 2018), and in crafts and tools (Rasalato *et al.* 2010; Valerio-Vargas and Espinoza 2019).

The importance of the human dimension in elasmobranchs conservation is of recognized importance in academia (Booth *et al.* 2019; Oliveira *et al.* 2023; Ostrovski *et al.* 2021; Skubel *et al.* 2019). However, as noted, few studies aim to investigate the knowledge and perception of actors who interact directly with these animals. Furthermore, what makes this issue more sensitive is the problem of non-inclusion of local actors and their respective contributions in decision-making processes (Johannes *et al.* 2008; Ostrovski *et al.* 2021; Pinto *et al.* 2018; Renck *et al.* 2023; Skubel *et al.* 2019), in addition to establishing a simple and objective dialogue on the subject.

Elasmobranch conservation is a topic of different opinions. For example, there are those who relate conservation successes to country development levels by employing development indices (Lucifora *et al.* 2019) and the “emotional affinity” of people towards these animals, thus influencing management and fisheries resources management (Skubel *et al.* 2019; Ostrovski *et al.* 2021). In addition, behavioral and cultural changes may also take place, ignoring the history of exploitation between countries as a strategy to reduce or end elasmobranch capture (Booth *et al.* 2019; Lucifora *et al.* 2019). Counterbalancing these ideals that tend to homogenize and generalize issues associated with elasmobranch conservation to society, some coastal communities present cultural and/or religious expressions that aid in species conservation. For example, *Prionace glauca* is called the shark god (Temago-Purotu or Ma’o-purotu in Tahitian) by Anaa

Atoll inhabitants (French Polynesia) and, as a sacred element of this culture, it should not be fished or consumed (Torrente *et al.* 2018). For the Bajo people (eastern Indonesia), *Rhincodon typus* captures are prohibited due to laws established by the community’s ancestors, as the species is thought to be guarded by a protective spirit which helps fishers in times of adversity (Stacey *et al.* 2012). These examples reinforce the fact that Chondrichthyan conservation requires a comprehensive approach at the local level considering sociocultural, economic, and environmental factors and involving the main actors affected by the management process (Becerril-García *et al.* 2022; Ostrovski *et al.* 2021; Pinto *et al.* 2018; Renck *et al.* 2023; Seidu *et al.* 2022). In this regard, as noted by Diegues (2000), the adoption of generalized management and resource use models are not adequate and effective, as they neglect local particularities. Thus, it is crucial to integrate popular knowledge and the active participation of all involved, in order to make the management process inclusive, participatory, and understandable (Albuquerque *et al.* 2021; Alves and Nishida 2003; Johannes *et al.* 2008; Silvano and Valbo-Jørgensen 2008), also comprising a mobilization and social empowerment tool (Alves and Nishida 2003). This will, in turn, contribute to conservation effectiveness, strictly associated with fisheries sustainability, reflecting aquatic environment health and benefitting local economies and cultures.

## CONCLUSION

This review demonstrates an increasing trend in the scientific production on LEK directed to Elasmobranchii species in the last decade. Surveys were carried out mostly in Brazil, in marine environments and outside conservation units. This highlights the need to direct research efforts to other countries and freshwater environments, mainly due to the lack of historical information on the biology, ecology and relationships between fish and people, in addition to the threat status of many members of this taxonomic group.

The mention of many endangered species (such *Isurus oxyrinchus*, *Sphyrna lewini*, *Carcharhinus leucas*) highlights research efforts in gathering information in this regard and reinforces the current threat state of many Elasmobranchs and Chimaeras species. In addition, the lack of any Holocephali mentions indicates the importance of exploring other ethnographic methodologies, diversifying interviewed actors, and other less researched taxa like freshwater stingrays, which are potentially more subject to the threats Chondrichthyes are exposed to.

The interdisciplinary ethnoichthyology character was demonstrated herein by the varied actors and top-

ics addressed in the retrieved publications. However, other human groups (such as divers, fish processors, health agents, among others) should be included in this type of research. This will allow for further Chondrichthyes knowledge access and information on interactions and issues on rarely addressed topics, such as conservation, which is strictly associated with fishing resource sustainability and maintenance and local cultures that effectively interact with Chondrichthyes.

## ACKNOWLEDGMENT

The authors would like to thank Laboratory of Technological and Fisheries Biology (BioTecPesca) students for their collaboration. Thanks are also due to Prof. Dr. Vinicius Fortes Farjalla (VFF) for methodology suggestions, Msc. Aléxia Antonia Lessa da Costa (AALC) who helped with the R script, and Dr. Rachel Ann Hauser-Davis (RAHD) for translating the manuscript.

## FUNDING

MV acknowledges Fundação Carlos Chagas Filho de Amparo à Pesquisa do Estado do Rio de Janeiro – FAPERJ (Process number E-26/200.934/2022) and Conselho Nacional de Desenvolvimento Científico e Tecnológico - CNPq (Process number 302398/2022-8) and Fundo Brasileiro para a Biodiversidade – FUNBIO for financial support. The implementation of the Projeto Pesquisa Marinha e Pesqueira is a compensatory measure established by the Conduct Adjustment Agreement under the responsibility of the PRIO company, conducted by the Federal Public Ministry—MPF/RJ.

## DATA AVAILABILITY

The data used to support the findings of this study are available from the corresponding author upon reasonable request.

## CONFLICT OF INTEREST

The authors declare no conflicts of interest.

## CONTRIBUTION STATEMENT

Conceived of the presented idea: MCN, MV.  
Carried out the experiment: MCN.  
Carried out the data analysis: MCN, SRS.  
Wrote the first draft of the manuscript: MCN.  
Review and final write of the manuscript: MCN, SRS, MV.  
Supervision: MV.

## REFERENCES

- Abell R, Thieme ML, Revenga C, Bryer M, Kotterlat M, Bogutskaya N, Coad B, Mandrak N, Balderas SC, Bussing W, Stiassny MLJSP, Allen GR, Unmack P, Naseka A, NG R, Sindorf N, Robertson J, Armijo E, Higgins JV, Petry P (2008) **Freshwater Ecoregions of the World: A New Map of Biogeographic Units for Freshwater Biodiversity Conservation.** *BioScience* doi: [10.1641/B580507](https://doi.org/10.1641/B580507).
- Albuquerque UP, Silva JS, Campos JLA, Sousa RS, Silva TC, Alves RRN (2013) **The current status of ethnobiological research in Latin America: Gaps and perspectives.** *Journal of Ethnobiology and Ethnomedicine* doi: [10.1186/1746-4269-9-72](https://doi.org/10.1186/1746-4269-9-72).
- Albuquerque UP, Ludwig D, Feitosa IS, Moura JMB, Gonçalves PHS, Silva RH, Silva TC, Gonçalves-Souza T, Ferreira-Júnior WS (2021) **Integrating traditional ecological knowledge into academic research at local and global scales.** *Regional Environmental Change* doi: [10.1007/s10113-021-01774-2](https://doi.org/10.1007/s10113-021-01774-2).
- Alves RRN, Nishida AK (2003) **Aspectos socioeconômicos e percepção ambiental dos catadores de caranguejo-uçá *Ucides cordatus cordatus* (L. 1763) (Decapoda, Brachyura) do estuário do rio Mamanguape, nordeste do Brasil.** *Interciencia* doi: [10.1016/B978-0-12-809913-1.00008-9](https://doi.org/10.1016/B978-0-12-809913-1.00008-9).
- Alves RRN, Silva JS, Chave LS, Albuquerque UP (2018) **Ethnozoology: An Overview and Current Perspectives.** In: Alves RRN, Albuquerque UP (eds) *Ethnozoology Animals in our Lives*. Academic Press, London, UK. pp. 513–521.
- Alves RRN, Souto WMS (2011) **Ethnozoology in Brazil: Current status and perspectives.** *Journal of Ethnobiology and Ethnomedicine* doi: [10.1186/1746-4269-7-22](https://doi.org/10.1186/1746-4269-7-22).
- Aswani S, Lemahieu A, Sauer WHH (2018) **Global trends of local ecological knowledge and future implications.** *PLoS ONE* doi: [10.1371/journal.pone.0195440](https://doi.org/10.1371/journal.pone.0195440).
- Bahuchet S (1992) **Esquisse de l'ethnoichtyologie des Yasa du Cameroun.** *Anthropos*, 87, 511–520.
- Barbato M, Barría C, Bellodi A, Bonanomi S, Borme D, Četkovic I, Colloca F, Colmenero AI, Crocetta F, Carlo F, Demir E, Lorenzo M, Follesa MC, Garibaldi F, Giglio G, Giovos I, Guerriero G, Hentati O, Ksibi M, Kruschel C, Lanteri L, Leonetti FL, Ligas A,

- Madonna A, Mátic-Skoko S, Mimica R, Moutopoulos DK, Mulas A, Nerlovic V, Pesic A, Porcu C, Riginella E, Sperone E, Tsouknidas K, Tunçer S, Vrdoljak D, Mazzoldi C (2021) **The use of fishers' Local Ecological Knowledge to reconstruct fish behavioural traits and fishers' perception of conservation relevance of elasmobranchs in the Mediterranean Sea.** *Mediterranean Marine Science* doi: [10.12681/mms.25306](https://doi.org/10.12681/mms.25306).
- Barbosa-Filho MLV, Schiavetti A, Alarcon DT, Costa-Neto EM (2014) **"Shark is the man!": ethnoknowledge of Brazil's South Bahia fishermen regarding shark behaviors.** *Journal of Ethnobiology and Ethnomedicine* doi: [10.1186/1746-4269-10-54](https://doi.org/10.1186/1746-4269-10-54).
- Baremore IE, Graham RT, Witt MJ (2021) **Fishing down the reef slope: Characteristics of the nearshore deepwater fisheries of MesoAmerica.** *Ocean and Coastal Management* doi: [10.1016/j.ocecoaman.2021.105773](https://doi.org/10.1016/j.ocecoaman.2021.105773).
- Barrowclift E, Gravel SM, Pardo SA, Bigman JS, Berggren P, Dulvy NK (2023) **Tropical rays are intrinsically more sensitive to overfishing than the temperate skates.** *Biological Conservation* doi: [10.1016/j.biocon.2023.110003](https://doi.org/10.1016/j.biocon.2023.110003).
- Bastari A, Mascarell Y, Ortega M, Coll M (2022) **Local fishers experience can contribute to a better knowledge of marine resources in the Western Mediterranean Sea.** *Fisheries Research* doi: [10.1016/j.fishres.2021.106222](https://doi.org/10.1016/j.fishres.2021.106222).
- Becerril-García EE, Arauz R, Arellano-Martínez M, Bonfil R, Ayala-Bocos A, Castillo-Géniz JL, Carrera-Fernández M, Charvet P, Chiaramonte G, Cisneros-Montemayor AM, Concha F, Espinoza M, Ehemann NR, Estupiñán-Montaño C, Fuentes K, Galván-Magaña F, Graham R, Hacoheñ-Domené A, Hazin F, Godard-Codding CAG (2022) **Research priorities for the conservation of chondrichthyans in Latin America.** *Biological Conservation* doi: [10.1016/j.biocon.2022.109535](https://doi.org/10.1016/j.biocon.2022.109535).
- Begossi A, Braga, FMS (1992) **Food taboos and folk medicine among fishermen from the Tocantins River (Brazil).** *Amazoniana*. 12(1):101-118.
- Begossi A, Hanazaki N, Ramos RM (2004) **Food chain and the reasons for fish food taboos among Amazonian and Atlantic Forest Fishers (Brazil).** *Ecological Applications* doi: [10.1890/03-5072](https://doi.org/10.1890/03-5072).
- Begossi A, Salivonchik S, Lopes PFM, Silvano RAM (2016) **Fishers' knowledge on the coast of Brazil.** *Journal of Ethnobiology and Ethnomedicine* doi: [10.1186/s13002-016-0091-1](https://doi.org/10.1186/s13002-016-0091-1).
- Berkes F, Colding J, Folke C (2000) **Rediscovery of Traditional Ecological Knowledge as Adaptive Management.** *Ecological Applications* doi: [10.2307/2641280](https://doi.org/10.2307/2641280).
- Blanco-Parra MDP, Gasca AA, Rincón CAR, Martínez NHG, Niño-Torres CA (2022) **Citizen Science as a Tool to Get Baseline Ecological and Biological Data on Sharks and Rays in a Data-Poor Region.** *Sustainability* doi: [10.3390/su14116490](https://doi.org/10.3390/su14116490).
- Booth H, Squires D, Milner-Gulland EJ (2019) **The neglected complexities of shark fisheries, and priorities for holistic risk-based management.** *Ocean & Coastal Management* doi: [10.1016/j.ocecoaman.2019.104994](https://doi.org/10.1016/j.ocecoaman.2019.104994).
- Burns P, Hawkins J, Roberts C (2020) **Reconstructing the history of ocean wildlife around Ascension Island.** *Aquatic Conservation: Marine and Freshwater Ecosystems* doi: [10.1002/aqc.3304](https://doi.org/10.1002/aqc.3304).
- Cashion MS, Bailly N, Pauly D (2019) **Official catch data underrepresented shark and ray taxa caught in Mediterranean and Black Sea fisheries.** *Marine Policy* doi: [10.1016/j.marpol.2019.02.041](https://doi.org/10.1016/j.marpol.2019.02.041).
- Chapman BK, McPhee D (2016) **Global shark attack hotspots: Identifying underlying factors behind increased unprovoked shark bite incidence.** *Ocean & Coastal Management* doi: [10.1016/j.ocecoaman.2016.09.010](https://doi.org/10.1016/j.ocecoaman.2016.09.010).
- Cisneros-Montemayor AM, Becerril-García EE, Berdeja-Zavala O, Ayala-Bocos A (2020) **Shark ecotourism in Mexico: Scientific research, conservation, and contribution to a Blue Economy.** *Advances in Marine Biology* doi: [10.1016/bs.amb.2019.08.003](https://doi.org/10.1016/bs.amb.2019.08.003).
- Coelho KKF, Lima FS, Wosnick N, Nunes AROP, Silva APC, Gava TT, Brito RMS, Ferreira, LJS, Duailibe ICFDS, Dias HN, Almeida ZS, Nunes JLS (2021) **Research trends on elasmobranchs from the Brazilian Amazon coast: A four-decade review.** *Biota Neotropica* doi: [10.1590/1676-0611-BN-2021-1218](https://doi.org/10.1590/1676-0611-BN-2021-1218).
- Davidson LNK, Krawchuk MA, Dulvy NK (2016) **Why have global shark and ray landings declined: Improved management or overfishing?** *Fish and Fisheries* doi: [10.1111/faf.12119](https://doi.org/10.1111/faf.12119).
- Di Dario F, Petry AC, Mincarone MM, Pereira MMS, Santos RM (2011) **New records of coastal fishes in the northern Rio de Janeiro State, Brazil, with comments on the biogeography of the south-**

- western Atlantic Ocean. *Journal of Fish Biology* doi: 10.1111/j.1095-8649.2011.03035.x.
- Didier D, Kemper J, Ebert D (2012) **Phylogeny, Biology and Classification of Extant Holocephalans**. In: Carrier JC, Musick JA, Heithaus MR (eds) *Biology of Sharks and their Relatives*. CRC Press, Florida. p. 97-122.
- Diegues ACS (2000) **Etnoconservação: novos rumos para a conservação da natureza**. HUCITEC, São Paulo, SP, Brazil.
- Dulvy NK, Pacoureau N, Rigby CL, Pollom RA, Jabado RW, Ebert DA, Finucci B, Pollock CM, Cheok J, Derrick DH, Herman KB, Sherman CS, VanderWright WJ, Lawson JM, Walls RHL, Carlson JK, Charvet P, Bineesh KK, Fernando D, Simpfendorfer CA (2021) **Overfishing drives over one-third of all sharks and rays toward a global extinction crisis**. *Current Biology* doi: 10.1016/j.cub.2021.08.062.
- Dulvy NK, Simpfendorfer CA, Davidson LNK, Fordham SV, Bräutigam A, Sant G, Welch DJ (2017) **Challenges and Priorities in Shark and Ray Conservation**. *Current Biology* doi: 10.1016/j.cub.2017.04.038.
- Ebert DA, Dando M, Fowler S (2021) **Sharks of the world: A complete guide**. Princeton University Press, Princeton, NJ, USA.
- Eurostat (2023) **Administrative Units / Statistical Units**. [<https://ec.europa.eu/eurostat/web/gisco/geodata/reference-data/administrative-units-statistical-units/countries#countries20>] Accessed 28 Feb 2023.
- Fariña-Pestano ÁR, Ruiz-Velásquez LJ, Rojas-Flores MY, Peñuela-Jiménez JH, González Henríquez MN (2011) **Etnobiología marina y aspectos pesqueros en seis comunidades costeras de la Península de Paria, Venezuela**. *Interciencia* 36(4):256-264.
- Ferretti F, Myers RA, Serena F, Lotze HK (2008) **Loss of large predatory sharks from the Mediterranean Sea**. *Conservation Biology* doi: 10.1111/j.1523-1739.2008.00938.x.
- Fogliarini CO, Longo GO, Francini-Filho RB, McClenachan L, Bender MG (2022) **Sailing into the past: Nautical charts reveal changes over 160 years in the largest reef complex in the South Atlantic Ocean**. *Perspectives in Ecology and Conservation* doi: 10.1016/j.pecon.2022.05.003.
- Freitas RF, Machado LP, Freitas RHA, Hanazaki N (2021) **Differences and similarities in local ecological knowledge about rays among fishers, residents, and tourists**. *Ethnobiology and Conservation* doi: 10.15451/EC2021-05-10.25-1-14.
- Fricke R, Eschmeyer WN, Van der Laan, R (2022) **Eschmeyer's Catalog of Fishes: Genera, Species, References**. [<http://researcharchive.calacademy.org/research/ichthyology/catalog/fishcatmain.asp>] Accessed 1 Feb 2023.
- García-Quijano CG, Pitchon A (2010) **Aquatic Ethnobiology**. In: Stepp JR (ed) *Ethnobiology: Encyclopedia of Life Support Systems (EOLSS)*. UNESCO Presss, Oxford, UK. p. 1–12.
- Giglio VJ, Bornatowski H (2016) **Fishers' ecological knowledge of smalleye hammerhead, Sphyrna tudes, in a tropical estuary**. *Neotropical Ichthyology* doi: 10.1590/1982-0224-20150103.
- Giglio VJ, Ternes MLF, Luiz OJ, Zapelini C, Freitas MO (2018) **Human consumption and popular knowledge on the conservation status of groupers and sharks caught by small-scale fisheries on Abrolhos Bank, SW Atlantic**. *Marine Policy* doi: 10.1016/j.marpol.2017.12.020.
- Gomes UL, Santos HRS, Gadig OBF, Signori CN, Vicente MM (2019) **Guia para Identificação de Tubarões, Raias e Quimeras do Estado do Rio de Janeiro (Chondrichthyes: Elasmobranchii e Holocephali)**. *Revista Nordestina de Biologia* doi: 10.22478/ufpb.2236-1480.2019v27n1.47122.
- Grant MI, White WT, Amepou Y, Baje L, Diedrich A, Ibana D, Jogo DJ, Jogo S, Kyne PM, Li O, Mana R, Mapmani N, Nagul A, Roeger D, Simpfendorfer CA, Chin A (2021) **Local knowledge surveys with small-scale fishers indicate challenges to sawfish conservation in southern Papua New Guinea**. *Aquatic Conservation: Marine and Freshwater Ecosystems* doi: 10.1002/aqc.3678.
- Gutiérrez-Santillán TV, Albuquerque UP, Valenzuela-Galván D, Reyes-Zepeda F, Vázquez LB, Mora-Olivo A, Arellano-Méndez LU (2019) **Trends on mexican ethnozoological research, vertebrates case: A systematic review**. *Ethnobiology and Conservation* doi: 10.15451/ec2019-01-8.01-1-39.
- Halevi G, Moed H, Bar-Ilan J (2017) **Suitability of Google Scholar as a source of scientific information and as a source of data for scientific evaluation—Review of the Literature**. *Journal of Informetrics* doi: 10.1016/j.joi.2017.06.005.
- Haque AB, Washim M, D'Costa NG, Baroi AR, Hosain N, Nanjiba R, Hasan SJ, Khan NA (2021) **Socio-ecological approach on the fishing and trade of rhino rays (Elasmobranchii: Rhinopristiformes) for their biological conservation in the Bay of Bengal, Bangladesh**. *Ocean and Coastal*

*Management* doi: [10.1016/j.ocecoaman.2021.105690](https://doi.org/10.1016/j.ocecoaman.2021.105690).

Heupel MR, Simpfendorfer CA (2007) **Movement and distribution of young bull sharks *Carcharhinus leucas* in a variable estuarine environment.** *Aquatic Biology* doi: [10.3354/ab00030](https://doi.org/10.3354/ab00030).

International Union for Conservation of Nature and Natural Resources (2022) **The IUCN Red List of Threatened Species Version 2022-2.** IUCN [<https://www.iucnredlist.org>] Accessed 16 February 2023.

Irigoyen A, Trobbiani G (2016) **Depletion of trophy large-sized sharks populations of the Argentinean coast, south-western Atlantic: insights from fishers' knowledge.** *Neotropical Ichthyology* doi: [10.1590/1982-0224-20150081](https://doi.org/10.1590/1982-0224-20150081).

Johannes RE, Freeman MMR, Hamilton RJ (2008) **Ignore fishers' knowledge and miss the boat.** *Fish and Fisheries* doi: [10.1111/j.1467-2979.2000.00019.x](https://doi.org/10.1111/j.1467-2979.2000.00019.x).

Jorgensen S, Micheli F, White T, van Houtan K, Alfaro-Shigueto J, Andrzejczek S, Arnoldi N, Baum J, Block B, Britten G, Butner C, Caballero S, Cardeñoso D, Chapple T, Clarke S, Cortés E, Dulvy N, Fowler S, Gallagher A, Ferretti F (2022) **Emergent research and priorities for shark and ray conservation.** *Endangered Species Research* doi: [10.3354/esr01169](https://doi.org/10.3354/esr01169).

Junqueira NT, Magnago LF, Pompeu PS (2020) **Assessing fish sampling effort in studies of Brazilian streams.** *Scientometrics* doi: [10.1007/s11192-020-03418-4](https://doi.org/10.1007/s11192-020-03418-4).

Katzer RJ, Schultz C, Pham K, Sotelo MA (2022) **The Natural History of Stingray Injuries.** *Prehospital and Disaster Medicine* doi: [10.1017/S1049023X22000565](https://doi.org/10.1017/S1049023X22000565).

Ladislau DS, Souza PL, Aride PHR, Oliveira AT, Gubiani ÉA (2021) **Current situation and future perspectives of ethnoichthyology in Brazil.** *Ethnobiology and Conservation* doi: [10.15451/EC2020-11-10.09-1-35](https://doi.org/10.15451/EC2020-11-10.09-1-35).

Leduc AOHC, Carvalho FHD, Hussey NE, Reis-Filho JA, Longo GO, Lopes PFM (2021) **Local ecological knowledge to assist conservation status assessments in data poor contexts: a case study with the threatened sharks of the Brazilian Northeast.** *Biodiversity and Conservation* doi: [10.1007/s10531-021-02119-5](https://doi.org/10.1007/s10531-021-02119-5).

Leeney RH, Poncet P (2015) **Using fishers' ecological knowledge to assess the status and cultural importance of sawfish in Guinea-**

**Bissau.** *Aquatic Conservation: Marine and Freshwater Ecosystems* doi: [10.1002/aqc.2419](https://doi.org/10.1002/aqc.2419).

Lopes MS, Bertucci TCP, Rapagnã L, Tubino RDA, Monteiro-Neto C, Tomas ARG, Tenório, MC, Lima T, Souza R, Carrillo-Briceño JD, Haimovici M, Macario K, Carvalho C, Socorro OA (2016) **The path towards endangered species: Prehistoric fisheries in southeastern Brazil.** *PLoS ONE* doi: [10.1371/journal.pone.0154476](https://doi.org/10.1371/journal.pone.0154476).

Lopes PFM, Hanazaki N, Nakamura EM, Salivonchik S, Begossi A (2021) **What fisher diets reveal about fish stocks.** *Ambio* doi: [10.1007/s13280-021-01506-0](https://doi.org/10.1007/s13280-021-01506-0).

López-Angarita J, Cubillos-M JC, Villate-Moreno M, del Cid A, Díaz JM, Cooke R, Cagua EF, Tilley A (2021) **Bright spots for research and conservation of the largemouth sawfish *Pristis pristis* in Colombia and Panamá.** *Endangered Species Research* doi: [10.3354/esr01150](https://doi.org/10.3354/esr01150).

Lucifora LO, Barbini SA, Scarabotti PA, Sabadin DE (2019) **Socio-economic development, scientific research, and exploitation explain differences in conservation status of marine and freshwater chondrichthyans among countries.** *Reviews in Fish Biology and Fisheries* doi: [10.1007/s11160-019-09584-w](https://doi.org/10.1007/s11160-019-09584-w).

Lucifora LO, Scarabotti PA, Barbini SA (2022) **Predicting and contextualizing sensitivity to overfishing in Neotropical freshwater stingrays (Chondrichthyes: Potamotrygonidae).** *Reviews in Fish Biology and Fisheries* doi: [10.1007/s11160-021-09696-2](https://doi.org/10.1007/s11160-021-09696-2).

Lyra-Neves RM, Santos EM, Medeiros PM, Alves RRN, Albuquerque UP (2015) **Etnozoologia no Brasil: Análise de riscos metodológicos nos trabalhos publicados.** *Brazilian Journal of Biology* doi: [10.1590/1519-6984.09314](https://doi.org/10.1590/1519-6984.09314).

Marques JGW (2012) **Etnoictiologia: pescando pescadores nas águas da transdisciplinaridade.** *Revista Ouricuri* 2(2):9–36.

Martín-Martín A, Orduna-Malea E, Thelwall M, Delgado López-Cózar E (2018) **Google Scholar, Web of Science, and Scopus: A systematic comparison of citations in 252 subject categories.** *Journal of Informetrics* doi: [10.1016/j.joi.2018.09.002](https://doi.org/10.1016/j.joi.2018.09.002).

Martínez-Candelas IA, Pérez-Jiménez JC, Espinoza-Tenorio A, McClenachan L, Méndez-Loeza I (2020) **Use of historical data to assess changes in the vulnerability of sharks.** *Fisheries Research* doi: [10.1016/j.fishres.2020.105526](https://doi.org/10.1016/j.fishres.2020.105526).

McClenachan L, Ferretti F, Baum JK (2012) **From**

archives to conservation: Why historical data are needed to set baselines for marine animals and ecosystems. *Conservation Letters* doi: 10.1111/j.1755-263X.2012.00253.x.

Mojetta AR, Travaglini A, Scacco U, Bottaro M (2018) **Where sharks met humans: The Mediterranean Sea, history and myth of an ancient interaction between two dominant predators.** *Regional Studies in Marine Science* doi: 10.1016/j.rsma.2017.10.001.

Moura MS, Vianna M (2020) **A new threat: assessing the main interactions between marine fish and plastic debris from a scientometric perspective.** *Reviews in Fish Biology and Fisheries* doi: 10.1007/s11160-020-09621-z.

Morrill WT (1967) **Ethnoichthyology of the Chacha.** *Ethnology* 6(4):405–416.

Narchi NE, Cornier S, Canu DM, Aguilar-Rosas LE, Bender MG, Jacquelin C, Thiba M, Moura GGM, Wit R (2014) **Marine ethnobiology a rather neglected area, which can provide an important contribution to ocean and coastal management.** *Ocean & Coastal Management* doi: 10.1016/j.ocecoaman.2013.09.014.

Nelson JS, Grande TC, Wilson MVH (2016) **Fishes of the World.** 5th. John Wiley & Sons, Inc, Hoboken, NJ, USA.

Nunes MUS, Cardoso OR, Soeth M, Silvano RAM, Fávaro LF (2021) **Fishers' ecological knowledge on the reproduction of fish and shrimp in a subtropical coastal ecosystem.** *Hydrobiologia* doi: 10.1007/s10750-020-04503-8.

Oliveira CDL, Ladle RJ, Silva-Batista, V (2023) **Patterns and trends in scientific production on marine elasmobranchs: research hotspots and emerging themes for conservation.** *Journal of Coastal Conservation* doi: 10.1007/s11852-023-00937-z.

Ostrovski RL, Violante GM, Brito MR, Valentin JL, Vianna M (2021) **The media paradox: influence on human shark perceptions and potential conservation impacts.** *Ethnobiology and Conservation* doi: 10.15451/ec2020-12-10.12-1-15.

Pinto MF, Oliveira TPR, Rocha LA, Alves RRN (2018) **People and Fishery Resources: A Multidimensional Approach.** In: Alves RRN, Albuquerque UP (eds) *Ethnozoology: Animals in Our Lives.* Academic Press, London, UK. p. 119–149.

R Development Core Team (2023) **R: A language and environment for statistical computing,**

**RDevelopment Core Team.** R Foundation for Statistical Computing, Vienna, Austria.

Ramires M, Rotundo MM, Begossi A (2012) **The use of fish in Ilhabela (São Paulo/Brazil): preferences, food taboos and medicinal indications.** *Biota Neotropica* doi: 10.1590/S1676-06032012000100002.

Rasalato E, Maginnity V, Brunnschweiler JM (2010) **Using local ecological knowledge to identify shark river habitats in Fiji (South Pacific).** *Environmental Conservation* doi: 10.1017/S0376892910000317.

Renck V, Ludwig D, Bollettin P, Reis-Filho JA, Polisel L, El-Hani C (2023) **Taking fishers' knowledge and its implications to fisheries policy seriously.** *Ecology and Society* doi: 10.5751/ES-14104-280207.

Rosa RS, Carvalho MR, Wanderley CA (2008) **Potamotrygon boesemani (Chondrichthyes: Myliobatiformes: Potamotrygonidae), a new species of Neotropical freshwater stingray from Surinam.** *Neotropical Ichthyology* doi: 10.1590/S1679-62252008000100001.

Ruddle K (2000) **Systems of Knowledge: Dialogue, Relationships and Process.** *Environment, Development and Sustainability* doi: 10.1023/A:1011470209408.

Sabadin DE, Barbini SA, Figueroa DE, Lucifora LO (2022) **Marine protected areas are not representative of chondrichthyan species assemblages in the Southwest Atlantic.** *Biodiversity and Conservation* doi: 10.1007/s10531-021-02323-3.

Sáenz-Arroyo A, Revollo-Fernández D (2016) **Local ecological knowledge concurs with fishing statistics: An example from the abalone fishery in Baja California, Mexico.** *Marine Policy* doi: 10.1016/j.marpol.2016.06.006.

Santana-Morales O, Cartamil D, Sosa-Nishizaki O, Zertuche-Chanes R, Hernández-Gutiérrez E, Graham J (2020) **Artisanal elasmobranch fisheries of northwestern Baja California, Mexico.** *Ciencias Marinas* doi: 10.7773/cm.v46i1.3023.

Santos SR, Macedo MLC, Maciel TR, Souza GBG, Almeida LS, Gadig OBF, Vianna M (2022) **A tale that never loses in the telling: Considerations for the shifting ethnobaseline based on artisanal fishers records from the southwestern Atlantic.** *Ethnobiology and Conservation* doi: 10.15451/ec2022-01-11.03-1-20.

Santos SR, Vianna M (2017) **Scientometric Analysis of the Fisheries Science for the Species**

of Cynoscion (Sciaenidae: Perciformes) from the Western Atlantic, with Emphasis in the Comparison of the North American and Brazilian Fisheries Catch Data. *Reviews in Fisheries Science and Aquaculture* doi: 10.1080/23308249.2017.1337078.

Seidu I, Brobbey LK, Danquah E, Oppong SK, Van Beuningen D, Dulvy NK (2022) **Local Ecological Knowledge, Catch Characteristics, and Evidence of Elasmobranch Depletions in Western Ghana Artisanal Fisheries.** *Human Ecology* doi: 10.1007/s10745-022-00371-z.

Serra-Pereira B, Erzini K, Maia C, Figueiredo I (2014) **Identification of potential essential fish habitats for skates based on fishers' knowledge.** *Environmental Management* doi: 10.1007/s00267-014-0257-3.

Sherman CS, Simpfendorfer CA, Pacoureau N, Matsushiba JH, Yan HF, Walls RHL, Rigby CL, VanderWright WJ, Jabado RW, Pollom RA, Carlson JK, Charvet P, Ali AB, Fahmi, Cheok J, Derrick DH, Herman KB, Finucci B, Eddy TD, Palomares MLD, Avalos-Castillo CG, Kinattumkara B, Blanco-Parra MP, Dharmadi, Espinoza M, Fernando D, Haque AB, Mejía-Falla PA, Navia AF, Pérez-Jiménez JC, Utzurum J, Yuneni RR, Dulvy NK (2023) **Half a century of rising extinction risk of coral reef sharks and rays.** *Nature Communications* doi: 10.1038/s41467-022-35091-x.

Shiffman DS, Ajemian MJ, Carrier JC, Daly-Engel TS, Davis MM, Dulvy NK, Grubbs RD, Hinojosa NA, Imhoff J, Kolmann MA, Nash CS, Paig-Tran EWM, Peele EE, Skubel RA, Wetherbee BM, Whitenack LB, Wyffels JT (2020) **Trends in Chondrichthyan Research: An Analysis of Three Decades of Conference Abstracts.** *Copeia* doi: 10.1643/OT-19-179R.

Silva GA, Poscai AN, Casas ALS (2020) **Injuries Caused by Freshwater Stingrays in the Western Amazon: Folk Medicine and Beliefs.** *Ethnobiology Letters* doi: 10.14237/ebl.11.1.2020.1586.

Silva PM, Teixeira CM, Pita C, Cabral HN, França S (2021) **Portuguese Artisanal Fishers' Knowledge About Elasmobranchs—A Case Study.** *Frontiers in Marine Science* doi: 10.3389/fmars.2021.684059.

Silvano RAM, Valbo-Jørgensen J (2008) **Beyond fishermen's tales: Contributions of fishers' local ecological knowledge to fish ecology and fisheries management.** *Environment, Development and Sustainability* doi: 10.1007/s10668-008-9149-0.

Silvano RAM, Begossi A (2012) **Fishermen's local**

**ecological knowledge on Southeastern Brazilian coastal fishes: contributions to research, conservation, and management.** *Neotropical Ichthyology* doi: 10.1590/S1679-62252012000100013.

Skubel RA, Shriver-Rice M, Maranto GM (2019) **Introducing relational values as a tool for shark conservation, science, and management.** *Frontiers in Marine Science* doi: 10.3389/fmars.2019.00053.

Smith H, Garcia-Lozano A, Baker D, Blondin H, Hamilton J, Choi J, Basurto X, Silliman B (2021) **Ecology and the science of small-scale fisheries: A synthetic review of research effort for the Anthropocene.** *Biological Conservation* doi: 10.1016/j.biocon.2020.108895.

Souza GBG, Vianna M (2020) **Fish-based indices for assessing ecological quality and biotic integrity in transitional waters: A systematic review.** *Ecological Indicators* doi: 10.1016/j.ecolind.2019.105665.

Stacey NE, Karam J, Meekan MG, Pickering S, Nines J (2012) **Prospects for whale shark conservation in Eastern Indonesia through bajo traditional ecological knowledge and community-based monitoring.** *Conservation and Society* doi: 10.4103/0972-4923.92197.

Stein RW, Mull CG, Kuhn TS, Aschliman NC, Davidson LNK, Joy JB, Smith GJ, Dulvy NK, Mooers AO (2018) **Global priorities for conserving the evolutionary history of sharks, rays and chimaeras.** *Nature Ecology and Evolution* doi: 10.1038/s41559-017-0448-4.

Svanberg I, Locker A (2020) **Ethnoichthyology of freshwater fish in Europe: a review of vanishing traditional fisheries and their cultural significance in changing landscapes from the later medieval period with a focus on northern Europe.** *Journal of Ethnobiology and Ethnomedicine* doi: 10.1186/s13002-020-00410-3.

Torrente F, Bambridge T, Planes S, Guiart J, Clua EG (2018) **Sea Swallowers and Land Devourers: Can Shark Lore Facilitate Conservation?.** *Human Ecology* doi: 10.1007/s10745-018-0018-7.

Valerio-Vargas JA., Espinoza M (2019) **A beacon of hope: Distribution and current status of the largemouth sawfish in Costa Rica.** *Endangered Species Research* doi: 10.3354/ESR00992.

Vieira ES, Gomes JANF (2009) **A comparison of Scopus and Web of science for a typical university.** *Scientometrics* doi: 10.1007/s11192-009-2178-0.

Whitty JM, Keleher J, Ebner BC, Gleiss AC, Simpfendorfer CA, Morgan DL (2017) **Habitat use of a Critically Endangered elasmobranch, the largetooth sawfish *Pristis pristis*, in an intermittently flowing riverine nursery.** *Endangered Species Research* doi: [10.3354/esr00837](https://doi.org/10.3354/esr00837).

**Received:** 02 August 2023  
**Accepted:** 25 November 2023  
**Published:** 12 December 2023

**Editor:** Rômulo Alves

## Additional Files

**Add File 1.** List of articles included in the Bibliometric review.

Code	Author(s)	Title	Year	Journal	DOI
<b>A001</b>	Pierini SV, Warrell DA, Paulo A, Theakston RDG	High incidence of bites and stings by snakes and other animals among rubber tappers and Amazonian Indians of the Juruá Valley, Acre State, Brazil	1996	Toxicon	10.1016/0041-0101(95)00125-5
<b>A002</b>	Costa-Neto EM	Food avoidances and preferences among fishermen communities from the county of Conde, State of Bahia, Brazil	2000	Revista de Nutrição	10.1590/S1415-52732000000200006
<b>A003</b>	Dalla Rosa L, Secchi ER	Killer whale ( <i>Orcinus orca</i> ) interactions with the tuna and swordfish longline fishery off southern and south-eastern Brazil: A comparison with shark interactions	2007	Journal of the Marine Biological Association of the United Kingdom	10.1017/S0025315407054306
<b>A004</b>	Jonahson M, Harding S	Occurrence of whale sharks ( <i>Rhincodon typus</i> ) in Madagascar	2007	Fisheries Research	10.1016/j.fishres.2006.11.023
<b>A005</b>	Carlson JK, Osborne J, Schmidt TW	Monitoring the recovery of small-tooth sawfish, <i>Pristis pectinata</i> , using standardized relative indices of abundance	2007	Biological Conservation	10.1016/j.biocon.2006.11.013
<b>A006</b>	Psomadakis PN, Maio N, Vacchi M	The chondrichthyan biodiversity in the Gulf of Naples (SW Italy, Tyrrhenian Sea): An historical overview	2009	Cybium	-
<b>A007</b>	Garrone-Neto D, Haddad-Junior V	Stingrays in rivers in southeastern Brazil: Occurrence localities and impact on the population	2010	Revista da Sociedade Brasileira de Medicina Tropical	10.1590/s0037-86822010000100018

Continues...

Code	Author(s)	Title	Year	Journal	DOI
A008	Rasalato E, Maginnity V, Brunnschweiler JM	Using local ecological knowledge to identify shark river habitats in Fiji (South Pacific)	2010	Environmental Conservation	<a href="https://doi.org/10.1017/S0376892910000317">10.1017/S0376892910000317</a>
A009	Ainsworth CH	Quantifying Species Abundance Trends in the Northern Gulf of California Using Local Ecological Knowledge	2011	Marine And Coastal Fisheries	<a href="https://doi.org/10.1080/19425120.2010.549047">10.1080/19425120.2010.549047</a>
A010	Anderson RC, Adam MS, Kitchen-Wheeler AM, Stevens G	Extent and economic value of manta ray watching in maldives	2011	Tourism in Marine Environments	<a href="https://doi.org/10.3727/154427310X12826772784793">10.3727/154427310X12826772784793</a>
A011	Anderson RC, Adam MS, Goes JI	From monsoons to mantas: Seasonal distribution of Manta alfredi in the Maldives	2011	Fisheries Oceanography	<a href="https://doi.org/10.1111/j.1365-2419.2011.00571.x">10.1111/j.1365-2419.2011.00571.x</a>
A012	Lam VYY, Sadovy De Mitcheson Y	The sharks of South East Asia - unknown, unmonitored and unmanaged	2011	Fish and Fisheries	<a href="https://doi.org/10.1111/j.1467-2979.2010.00383.x">10.1111/j.1467-2979.2010.00383.x</a>
A013	Fariña-Pestano AR, Ruiz-Velásquez LDJ, Flores MYR, Peñuela-Jiménez JH, González-Henríquez MN	Marine ethnobiology and fishery aspects in six coastal communities of the Paria Peninsula, Venezuela	2011	Interciencia	-
A014	Maynou F, Sbrana M, Sartor P, Maravelias C, Kavadas S, Damalas D, Cartes JE, Osio G	Estimating trends of population decline in long-lived marine species in the mediterranean sea based on fishers' perceptions	2011	PLoS ONE	<a href="https://doi.org/10.1371/journal.pone.0021818">10.1371/journal.pone.0021818</a>
A015	Carruthers EH, Neis B	Bycatch mitigation in context: Using qualitative interview data to improve assessment and mitigation in a data-rich fishery	2011	Biological Conservation	<a href="https://doi.org/10.1016/j.biocon.2011.06.007">10.1016/j.biocon.2011.06.007</a>
A016	Ward-Paige CA, Lotze HK	Assessing the value of recreational divers for censusing elasmobranchs	2011	PLoS ONE	<a href="https://doi.org/10.1371/journal.pone.0025609">10.1371/journal.pone.0025609</a>

Continues...

Code	Author(s)	Title	Year	Journal	DOI
A017	Taylor RB, Morrison MA, Shears NT	Establishing baselines for recovery in a marine reserve (Poor Knights Islands, New Zealand) using local ecological knowledge	2011	Biological Conservation	10.1016/j.biocon.2011.09.009
A018	Stacey NE, Karam J, Meekan MG, Pickering S, Ninef J	Prospects for whale shark conservation in Eastern Indonesia through bajo traditional ecological knowledge and community-based monitoring	2012	Conservation and Society	10.4103/0972-4923.92197
A019	Ramires M, Rotundo MM, Begossi A	The use of fish in Ilhabela (São Paulo/Brazil): preferences, food taboos and medicinal indications	2012	Biota Neotropica	10.1590/S1676-06032012000100002
A020	Li W, Wang Y, Norman B	A preliminary survey of whale shark <i>Rhincodon typus</i> catch and trade in China: An emerging crisis	2012	Journal of Fish Biology	10.1111/j.1095-8649.2012.03250.x
A021	Holcer D, Lazar B, Mackelworth P, Fortuna CM	Rare or just unknown? The occurrence of the giant devil ray ( <i>Mobula mobular</i> ) in the Adriatic Sea	2013	Journal of Applied Ichthyology	10.1111/jai.12034
A022	Previero M, Minte-Vera CV, Moura RL	Fisheries monitoring in Babel: Fish ethnotaxonomy in a hotspot of common names	2013	Neotropical Ichthyology	10.1590/S1679-62252013000200016
A023	Bentz J, Dearden P, Ritter E, Calado H	Shark diving in the Azores: Challenge and opportunity	2014	Tourism in Marine Environments	10.3727/154427314X14056884441789
A024	Villalobos-Rojas F, Herrera-Correal J, Garita-Alvarado C, Clarke T, Beita-Jiménez A	Economic activities that depend on ichthyofauna in the north pacific of Costa Rica	2014	Revista de Biología Tropical	10.15517/rbt.v62i4.20038

Continues...

Code	Author(s)	Title	Year	Journal	DOI
A025	Serra-Pereira B, Erzini K, Maia C, Figueiredo I	Identification of potential essential fish habitats for skates based on fishers' knowledge	2014	Environmental Management	<a href="https://doi.org/10.1007/s00267-014-0257-3">10.1007/s00267-014-0257-3</a>
A026	Barbosa-Filho MLV, Schiavetti A, Alarcon DT, Costa-Neto EM	"Shark is the man!" : Ethnoknowledge of Brazil's South Bahia fishermen regarding shark behaviors	2014	Journal of Ethnobiology and Ethnomedicine	<a href="https://doi.org/10.1186/1746-4269-10-54">10.1186/1746-4269-10-54</a>
A027	Leeney RH, Poncet P	Using fishers' ecological knowledge to assess the status and cultural importance of sawfish in Guinea-Bissau	2015	Aquatic Conservation: Marine and Freshwater Ecosystems	<a href="https://doi.org/10.1002/aqc.2419">10.1002/aqc.2419</a>
A028	Jabado RW, Al Ghais SM, Hamza W, Henderson AC	The shark fishery in the United Arab Emirates: An interview based approach to assess the status of sharks	2015	Aquatic Conservation: Marine and Freshwater Ecosystems	<a href="https://doi.org/10.1002/aqc.2477">10.1002/aqc.2477</a>
A029	Glaus KBJ, Adrian-Kalchhauser I, Burkhardt-Holm P, White WT, Brunnschweiler JM	Characteristics of the shark fisheries of Fiji	2015	Scientific Reports	<a href="https://doi.org/10.1038/srep17556">10.1038/srep17556</a>
A030	Reis-Filho JA, Freitas RHA, Loiola M, Leite L, Soeiro G, Oliveira HHQ, Sampaio CLS, Nunes JCC, Leduc AOH	Traditional fisher perceptions on the regional disappearance of the largetooth sawfish <i>Pristis pristis</i> from the central coast of Brazil	2016	Endangered Species Research	<a href="https://doi.org/10.3354/esr00711">10.3354/esr00711</a>
A031	Irigoyen A, Trobbiani G	Depletion of trophy large-sized sharks populations of the Argentinean coast, south-western atlantic: Insights from fishers' knowledge	2016	Neotropical Ichthyology	<a href="https://doi.org/10.1590/1982-0224-20150081">10.1590/1982-0224-20150081</a>
A032	Giglio VJ, Bornatowski H	Fishers' ecological knowledge of small eye hammerhead, <i>Sphyrna tudes</i> , in a tropical estuary	2016	Neotropical Ichthyology	<a href="https://doi.org/10.1590/1982-0224-20150103">10.1590/1982-0224-20150103</a>

Continues...

Code	Author(s)	Title	Year	Journal	DOI
A033	Acebes JMV, Barr Y, Pereda JMR, Santos MD	Characteristics of a previously undescribed fishery and habitat for Manta alfredi in the Philippines	2016	Marine Biodiversity Records	<a href="https://doi.org/10.1186/s41200-016-0098-2">10.1186/s41200-016-0098-2</a>
A034	Leeney RH, Downing N	Sawfishes in The Gambia and Senegal - shifting baselines over 40years	2016	Aquatic Conservation: Marine and Freshwater Ecosystems	<a href="https://doi.org/10.1002/aqc.2545">10.1002/aqc.2545</a>
A035	Leeney RH	Fishers' ecological knowledge of sawfishes in Lake Piso, Liberia	2016	Aquatic Conservation: Marine and Freshwater Ecosystems	<a href="https://doi.org/10.1002/aqc.2542">10.1002/aqc.2542</a>
A036	Fortibuoni T, Borme D, Franceschini G, Giovannardi O, Raicevich S	Common, rare or extirpated? Shifting baselines for common angelshark, Squatina squatina (Elasmobranchii: Squatinidae), in the Northern Adriatic Sea (Mediterranean Sea)	2016	Hydrobiologia	<a href="https://doi.org/10.1007/s10750-016-2671-4">10.1007/s10750-016-2671-4</a>
A037	Begossi A, Salivonchyk S, Lopes PFM, Silvano RAM	Fishers' knowledge on the coast of Brazil	2016	Journal of Ethnobiology and Ethnomedicine	<a href="https://doi.org/10.1186/s13002-016-0091-1">10.1186/s13002-016-0091-1</a>
A038	Acebes JMV, Tull M	The history and characteristics of the mobulid ray fishery in the Bohol Sea, Philippines	2016	PLoS ONE	<a href="https://doi.org/10.1371/journal.pone.0161444">10.1371/journal.pone.0161444</a>
A039	O'Bryhim JR, Parsons ECM, Gilmore MP, Lance SL	Evaluating support for shark conservation among artisanal fishing communities in Costa Rica	2016	Marine Policy	<a href="https://doi.org/10.1016/j.marpol.2016.05.005">10.1016/j.marpol.2016.05.005</a>
A040	Iqbal M, Yustian I	Occurrence of the giant freshwater stingray Urogymnus polylepis in Sumatra, Indonesia (Chondrichthyes: Dasyatidae)	2016	Ichthyological Exploration of Freshwaters	

Continues...

Code	Author(s)	Title	Year	Journal	DOI
A041	Nascimento DM, Alves RRN, Barboza RRD, Schmidt AJ, Diele K, Mourão JS	Commercial relationships between intermediaries and harvesters of the mangrove crab <i>Ucides cordatus</i> (Linnaeus, 1763) in the Mamanguape River estuary, Brazil, and their socio-ecological implications	2017	Ecological Economics	<a href="https://doi.org/10.1016/j.ecolecon.2016.08.017">10.1016/j.ecolecon.2016.08.017</a>
A042	Leeney RH	Are sawfishes still present in Mozambique? A baseline ecological study	2017	PeerJ	<a href="https://doi.org/10.7717/peerj.2950">10.7717/peerj.2950</a>
A043	Cardeñosa D, Glau KBJ, Brunnschweiler JM	Occurrence of juvenile bull sharks ( <i>Carcharhinus leucas</i> ) in the Navua River in Fiji	2017	Marine and Freshwater Research	<a href="https://doi.org/10.1071/MF16005">10.1071/MF16005</a>
A044	Abati PAM, Torrez PPQ, Franca FOD, Tozzi FL, Guerreiro FMB, Santos SAT, Oliveira SMS, Haddad V	Injuries caused by freshwater stingrays in the Tapajos River Basin: a clinical and sociodemographic study	2017	Revista da Sociedade Brasileira de Medicina Tropical	<a href="https://doi.org/10.1590/0037-8682-0016-2017">10.1590/0037-8682-0016-2017</a>
A045	Barrowclift E, Temple AJ, Stead S, Jiddawi NS, Berggren P	Social, economic and trade characteristics of the elasmobranch fishery on Unguja Island, Zanzibar, East Africa	2017	Marine Policy	<a href="https://doi.org/10.1016/j.marpol.2017.06.002">10.1016/j.marpol.2017.06.002</a>
A046	Taylor SM, Braccini JM, Bruce BD, McAuley RB	Reconstructing Western Australian white shark ( <i>Carcharodon carcharias</i> ) catches based on interviews with fishers	2018	Marine and Freshwater Research	<a href="https://doi.org/10.1071/MF17140">10.1071/MF17140</a>
A047	Leeney RH, Mana RR, Dulvy NK	Fishers' ecological knowledge of sawfishes in the Sepik and Ramu rivers, northern Papua New Guinea	2018	Endangered Species Research	<a href="https://doi.org/10.3354/esr00887">10.3354/esr00887</a>

Continues...

Code	Author(s)	Title	Year	Journal	DOI
A048	Giglio VJ, Ternes MLF, Luiz OJ, Zapelini C, Freitas MO	Human consumption and popular knowledge on the conservation status of groupers and sharks caught by small-scale fisheries on Abrolhos Bank, SW Atlantic	2018	Marine Policy	<a href="https://doi.org/10.1016/j.marpol.2017.12.020">10.1016/j.marpol.2017.12.020</a>
A049	Barash A, Pickholtz R, Pickholtz E, Blaustein L, Rilov G	Seasonal aggregations of sharks near coastal power plants in Israel: an emerging phenomenon	2018	Marine Ecology Progress Series	<a href="https://doi.org/10.3354/meps12478">10.3354/meps12478</a>
A050	Martins APB, Feitosa LM, Lessa RP, Almeida ZS, Heupel M, Silva WM, Tchaicka L, Nunes JLS	Analysis of the supply chain and conservation status of sharks (Elasmobranchii: Superorder Selachimorpha) based on fisher knowledge	2018	PLoS ONE	<a href="https://doi.org/10.1371/journal.pone.0193969">10.1371/journal.pone.0193969</a>
A051	Busilacchi S, Butler JRA, Rochester WA, Posu J	Drivers of illegal livelihoods in remote transboundary regions: The case of the Trans-Fly region of Papua New Guinea	2018	Ecology and Society	<a href="https://doi.org/10.5751/ES-09817-230146">10.5751/ES-09817-230146</a>
A052	van den Boog T, Bulkan J, Tansey J, van Andel TR	Sustainability issues of commercial non-timber forest product extraction in West Suriname	2018	Journal of Ethnobiology and Ethnomedicine	<a href="https://doi.org/10.1186/s13002-018-0244-5">10.1186/s13002-018-0244-5</a>
A053	Esakkimuthu S, Sylvester Darvin S, Mutheeswaran S, Gabriel Paulraj M, Pandikumar P, Ignacimuthu S, Al-Dhabi NA	A study on food-medicine continuum among the non-institutionally trained siddha practitioners of Tiruvallur district, Tamil Nadu, India	2018	Journal of Ethnobiology and Ethnomedicine	<a href="https://doi.org/10.1186/s13002-018-0240-9">10.1186/s13002-018-0240-9</a>
A054	Vierus T, Gehrig S, Brunnschweiler JM, Glaus K, Zimmer M, Marie AD, Rico C	Discovery of a multispecies shark aggregation and parturition area in the Ba Estuary, Fiji Islands	2018	Ecology and Evolution	<a href="https://doi.org/10.1002/ece3.4230">10.1002/ece3.4230</a>

Continues...

Code	Author(s)	Title	Year	Journal	DOI
A055	Murphy SE, Campbell I, Drew JA	Examination of tourists' willingness to pay under different conservation scenarios; Evidence from reef manta ray snorkeling in Fiji	2018	PLoS ONE	<a href="https://doi.org/10.1371/journal.pone.0198279">10.1371/journal.pone.0198279</a>
A056	Peñaherrera-Palma C, van Putten I, Karpievitch YV, Frusher S, Llerena-Martillo Y, Hearn AR, Semmens JM	Evaluating abundance trends of iconic species using local ecological knowledge	2018	Biological Conservation	<a href="https://doi.org/10.1016/j.biocon.2018.07.004">10.1016/j.biocon.2018.07.004</a>
A057	Carvalho MM, Oliveira MR, Lopes PFM, Oliveira JEL	Ethnotaxonomy of sharks from tropical waters of Brazil	2018	Journal of Ethnobiology and Ethnomedicine	<a href="https://doi.org/10.1186/s13002-018-0273-0">10.1186/s13002-018-0273-0</a>
A058	Duarte DLV, Broadhurst MK, Dumont LFC	Challenges in adopting turtle excluder devices (TEDs) in Brazilian penaeid-trawl fisheries	2019	Marine Policy	<a href="https://doi.org/10.1016/j.marpol.2018.10.048">10.1016/j.marpol.2018.10.048</a>
A059	Cuevas JM, García M, Hozbor N, Faria VV, Paesch L	Tracing the occurrence of the Critically Endangered small-tooth sawfish <i>Pristis pectinata</i> at its southernmost distribution in the Southwest Atlantic Ocean	2019	Endangered Species Research	<a href="https://doi.org/10.3354/esr00932">10.3354/esr00932</a>
A060	Barbosa-Filho MLV, Hauser-Davis RA, Siciliano S, Dias TLP, Alves RRN, Costa-Neto EM	Historical shark meat consumption and trade trends in a global richness hotspot	2019	Ethnobiology Letters	<a href="https://doi.org/10.14237/ebl.10.1.2019.1560">10.14237/ebl.10.1.2019.1560</a>
A061	Valerio-Vargas JA, Espinoza M	A beacon of hope: Distribution and current status of the large-tooth sawfish in Costa Rica	2019	Endangered Species Research	<a href="https://doi.org/10.3354/esr00992">10.3354/esr00992</a>

Continues...

Code	Author(s)	Title	Year	Journal	DOI
A062	Rubio-Cisneros NT, Moreno-Báez M, Glover J, Rissolo D, Sáenz-Arroyo A, Götz C, Salas S, Andrews A, Marín G, Morales-Ojeda S, Antele F, Herrera-Silveira J	Poor fisheries data, many fishers, and increasing tourism development: Interdisciplinary views on past and current small-scale fisheries exploitation on Holbox Island	2019	Marine Policy	10.1016/j.marpol.2018.10.003
A063	Glaus KBJ,Adrian-Kalchhauser I, Piovano S, Appleyard SA, Brunnschweiler JM, Rico C	Fishing for profit or food? Socio-economic drivers and fishers' attitudes towards sharks in Fiji	2019	Marine Policy	10.1016/j.marpol.2018.11.037
A064	Mason JG,Alfaro-Shigueto J,Mangel JC,Brodie S, Bograd SJ, Crowder LB, Hazen EL	Convergence of fishers' knowledge with a species distribution model in a Peruvian shark fishery	2019	Conservation Science and Practice	10.1111/csp2.13
A065	Giovas I, Stoilas V-O,Al-Mabruk SAA,Doumpas N, Marakis P, Maximidi M,Moutopoulos D, Kleitou P, Keramidas I, Tiralongo F, Maddalena A	Integrating local ecological knowledge, citizen science and long-term historical data for endangered species conservation: Additional records of angel sharks (Chondrichthyes: Squatinidae) in the Mediterranean Sea	2019	Aquatic Conservation: Marine and Freshwater Ecosystems	10.1002/aqc.3089
A066	Hiddink JG, Shepperson J, Bater R, Goonesekera D, Dulvy NK	Near disappearance of the Angelshark <i>Squatina squatina</i> over half a century of observations	2019	Conservation Science and Practice	10.1111/csp2.97
A067	Lowe J, Tejada JFC, Meekan MG	Linking livelihoods to improved biodiversity conservation through sustainable integrated coastal management and community based dive tourism : Oslob Whale Sharks	2019	Marine Policy	10.1016/j.marpol.2019.103630

Continues...

Code	Author(s)	Title	Year	Journal	DOI
A068	Marques RA, TG, Sole-Cava Vianna M, Julio AM,	A new strategy proposal to monitor ray fins landings in south-east Brazil	2020	Aquatic Conservation: Marine and Freshwater Ecosystems	10.1002/aqc.3203
A069	Silva GA, Poscai AN, Casas ALD	Injuries Caused by Freshwater Stingrays in the Western Amazon: Folk Medicine and Beliefs	2020	Ethnobiology Letters	10.14237/eb1.11.1.2020.1586
A070	Ceyhan T, Akyol O, Demir-Saglam Y, Sen H, Ozgul A, Duzbastilar FO	The gathering of predators around the sea-cage fish farms in the Aegean Sea	2020	Cahiers De Biologie Marine	10.21411/CBM.A.F8856C42
A071	Hani MS, Lück M, Jompa J, Nessa MN, White AT, Hanifah MIHP	The role of small-scale manta ray tourism in eastern Indonesia's marine protected areas	2020	International Journal of Innovation, Creativity and Change	–
A072	Braulik G, Kasuga M, Majubwa G	Local ecological knowledge demonstrates shifting baselines and the large-scale decline of sawfishes (Pristidae) in Tanzania	2020	African Journal of Marine Science	10.2989/1814232X.2020.1728379
A073	Garcia-Rodriguez E, Sosa-Nishizaki O	Artisanal fishing activities and their documented interactions with juvenile white sharks inside a nursery area	2020	Aquatic Conservation: Marine and Freshwater Ecosystems	10.1002/aqc.3300
A074	Karnad D, Sutaria D, Jabado RW	Local drivers of declining shark fisheries in India	2020	Ambio	10.1007/s13280-019-01203-z
A075	Mason JG, Alfaro-Shigueto J, Mangel JC, Crowder LB, Ardoin NM	Fishers' solutions for hammerhead shark conservation in Peru	2020	Biological Conservation	10.1016/j.biocon.2020.108460
A076	Cisneros-Montemayor AM, Townsel A, Gonzales CM, Haas AR, Navarro-Holm EE, Salorio-Zuñiga T, Johnson AF	Nature-based marine tourism in the Gulf of California and Baja California Peninsula: Economic benefits and key species	2020	Natural Resources Forum	10.1111/1477-8947.12193

Continues...

Code	Author(s)	Title	Year	Journal	DOI
A077	Martínez-Candelas IA, Pérez-Jiménez JC, Espinoza-Tenorio A, McClenachan L, Méndez-Loeza I	Use of historical data to assess changes in the vulnerability of sharks	2020	Fisheries Research	<a href="https://doi.org/10.1016/j.fishres.2020.105526">10.1016/j.fishres.2020.105526</a>
A078	Colloca F, Carrozzi V, Simonetti A, Di Lorenzo M	Using Local Ecological Knowledge of Fishers to Reconstruct Abundance Trends of Elasmobranch Populations in the Strait of Sicily	2020	Frontiers in Marine Science	<a href="https://doi.org/10.3389/fmars.2020.00508">10.3389/fmars.2020.00508</a>
A079	Ladislau DS, Ribeiro MWS, Castro PDS, Aride PHR, Paiva AJV, Polese MF, Souza AB, Bassul LA, Lavander HD, Oliveira AT	Ornamental fishing in the region of Barcelos, Amazonas: socio-economic description and scenario of activity in the view of piabeiros	2020	Brazilian Journal Of Biology	<a href="https://doi.org/10.1590/1519-6984.215806">10.1590/1519-6984.215806</a>
A080	Dinkel TM, Sánchez-Lizaso JL	Involving stakeholders in the evaluation of management strategies for shortfin mako ( <i>Isurus oxyrinchus</i> ) and blue shark ( <i>Prionace glauca</i> ) in the Spanish longline fisheries operating in the Atlantic Ocean	2020	Marine Policy	<a href="https://doi.org/10.1016/j.marpol.2020.104124">10.1016/j.marpol.2020.104124</a>
A081	Cuevas-Gómez GA, Pérez-Jiménez JC, Méndez-Loeza I, Carrera-Fernández M, Castillo-Géniz JL	Identification of a nursery area for the critically endangered hammerhead shark ( <i>Sphyrna lewini</i> ) amid intense fisheries in the southern Gulf of Mexico	2020	Journal of Fish Biology	<a href="https://doi.org/10.1111/jfb.14471">10.1111/jfb.14471</a>
A082	Campbell E, Pasara-Polack A, Mangel JC, Alfaro-Shigueto J	Use of Small Cetaceans as Bait in Small-Scale Fisheries in Peru	2020	Frontiers in Marine Science	<a href="https://doi.org/10.3389/fmars.2020.534507">10.3389/fmars.2020.534507</a>

Continues...

Code	Author(s)	Title	Year	Journal	DOI
A083	Temple AJ, Stead SM, Hind-Ozan E, Jiddawi N, Berggren P	Comparison of local knowledge and researcher-led observations for wildlife exploitation assessment and management	2020	Environmental Conservation	<a href="https://doi.org/10.1017/S0376892920000296">10.1017/S0376892920000296</a>
A084	Haque AB, D'Costa NG, Washim M, Baroi AR, Hossain N, Hafiz M, Rahman S, Biswas KF	Fishing and trade of devil rays ( <i>Mobula</i> spp.) in the Bay of Bengal, Bangladesh: Insights from fishers' knowledge	2021	Aquatic Conservation: Marine and Freshwater Ecosystems	<a href="https://doi.org/10.1002/aqc.3495">10.1002/aqc.3495</a>
A085	Barbosa MLV, Ramires M, Mourao JS, Rosa RD, Alves RRN, Costa-Neto EM	Ethnotaxonomy of Sharks by Expert Fishers from South Bahia, Brazil: Implications for Fisheries Management and Conservation	2021	Ethnobiology and Conservation	<a href="https://doi.org/10.15451/ec2021-08-10.02-1-12">10.15451/ec2021-08-10.02-1-12</a>
A086	Malara D, Battaglia P, Consoli P, Arcadi E, Longo F, Stipa MG, Pagano L, Greco S, Andaloro F, Romeo T	When opportunistic predators interact with swordfish harpoon fishing activities: shark depredation over catches in the Strait of Messina (central Mediterranean Sea)	2021	European Zoological Journal	<a href="https://doi.org/10.1080/24750263.2021.1879284">10.1080/24750263.2021.1879284</a>
A087	Freitas RF, Machado LP, Freitas RHA, Hanazaki N	Differences and similarities in local ecological knowledge about rays among fishers, residents, and tourists	2021	Ethnobiology and Conservation	<a href="https://doi.org/10.15451/ec2021-05-10.25-1-14">10.15451/ec2021-05-10.25-1-14</a>

Continues...

Code	Author(s)	Title	Year	Journal	DOI
A088	Barbato M, Barria C, Bellodi A, Bonanomi S, Borome D, Cetkovic I, Colloca F, Colmenero AI, Crocetta F, De Carlo F, Demir E, Di Lorenzo M, Follesa MC, Garibaldi F, Giglio G, Giovos I, Guerriero G, Hentati O, Ksibi M, Kruschel C, Lanteri L, Leonetti FL, Ligas A, Madonna A, Skoko SM, Mimica R, Moutopoulos DK, Mulas A, Nerlovic V, Pesic A, Porcu C, Riginella E, Sperone E, Tsouknidas K, Tuncer S, Vrdoljak D, Mazzoldi C	The use of fishers' Local Ecological Knowledge to reconstruct fish behavioural traits and fishers' perception of the conservation relevance of elasmobranchs in the Mediterranean Sea	2021	Mediterranean Marine Science	<a href="https://doi.org/10.12681/mms.25306">10.12681/mms.25306</a>
A089	López-Angarita J, Cubillos-Moreno M, Del Cid A, Díaz JM, Cooke R, Cagua EF, Tilley A	Bright spots for research and conservation of the largetooth sawfish <i>Pristis pristis</i> in Colombia and Panamá	2021	Endangered Species Research	<a href="https://doi.org/10.3354/esr01150">10.3354/esr01150</a>
A090	Leduc AOHC, Carvalho FHD, Hussey NE, Reis-Filho JA, Longo GO, Lopes PFM	Local ecological knowledge to assist conservation status assessments in data poor contexts: a case study with the threatened sharks of the Brazilian Northeast	2021	Biodiversity and Conservation	<a href="https://doi.org/10.1007/s10531-021-02119-5">10.1007/s10531-021-02119-5</a>
A091	Queiroz JDGR, Bezerra NPA, Macena BCL, Hazin FHV	Back from the dead? Not really. The tale of the Galapagos shark ( <i>Carcharhinus galapagensis</i> ) in a remote Brazilian archipelago	2021	Biological Conservation	<a href="https://doi.org/10.1016/j.biocon.2021.109097">10.1016/j.biocon.2021.109097</a>

Continues...

Code	Author(s)	Title	Year	Journal	DOI
A092	Lopes PFM, Hanazaki N, Nakamura EM, Salivonchyk S, Begossi A	What fisher diets reveal about fish stocks	2021	Ambio	10.1007/s13280-021-01506-0
A093	Haque AB, Washim M, D'Costa NG, Baroi AR, Hossain N, Nanjiba R, Hasan SJ, Khan NA	Socio-ecological approach on the fishing and trade of rhino rays (Elasmobranchii: Rhinopristiformes) for their biological conservation in the Bay of Bengal, Bangladesh	2021	Ocean and Coastal Management	10.1016/j.ocecoaman.2021.105690
A094	Tanna A, Fernando D, Gobiraj R, Pathirana BM, Thilakaratna S, Jabado RW	Where have all the sawfishes gone? Perspectives on declines of these Critically Endangered species in Sri Lanka	2021	Aquatic Conservation: Marine and Freshwater Ecosystems	10.1002/aqc.3617
A095	Baremore IE, Graham RT, Witt MJ	Fishing down the reef slope: Characteristics of the nearshore deepwater fisheries of MesoAmerica	2021	Ocean and Coastal Management	10.1016/j.ocecoaman.2021.105773
A096	Almojil D	Local ecological knowledge of fisheries charts decline of sharks in data-poor regions	2021	Marine Policy	10.1016/j.marpol.2021.104638
A097	Nuez I, Gazo M, Cardona L	A closer look at the bycatch of medium-sized and large sharks in the northern Catalan coast (north-western Mediterranean Sea): Evidence of an ongoing decline?	2021	Aquatic Conservation: Marine and Freshwater Ecosystems	10.1002/aqc.3651

Continues...

Code	Author(s)	Title	Year	Journal	DOI
A098	Grant MI, White W, Amepou Y, Baje L, Diedrich A, Ibana D, Jogo DJ, Jogo S, Kyne PM, Li O, Mana R, Mapmani N, Nagul A, Roeger D, Simpfendorfer CA, Chin A	Local knowledge surveys with small-scale fishers indicate challenges to sawfish conservation in southern Papua New Guinea	2021	Aquatic Conservation: Marine and Freshwater Ecosystems	10.1002/aqc.3678
A099	Lopez-Angarita J, Villate-Moreno M, Diaz JM, Cubillos JC, Tilley A	Identifying nearshore nursery habitats for sharks and rays in the Eastern Tropical Pacific from fishers' knowledge and landings	2021	Ocean and Coastal Management	10.1016/j.ocecoaman.2021.105825
A100	Silva PM, Teixeira CM, Pita C, Cabral HN, Franca S	Portuguese Artisanal Fishers' Knowledge About Elasmobranchs-A Case Study	2021	Frontiers in Marine Science	10.3389/fmars.2021.684059
A101	Mustika PLK, Wonneberger E, Erzini K, Pasingi N	Marine megafauna bycatch in artisanal fisheries in Gorontalo, northern Sulawesi (Indonesia): An assessment based on fisher interviews	2021	Ocean and Coastal Management	10.1016/j.ocecoaman.2021.105606
A102	González-Mantilla PG, Gallagher AJ, León CJ, Vianna GMS	Challenges and conservation potential of shark-diving tourism in the Macaronesian archipelagos	2021	Marine Policy	10.1016/j.marpol.2021.104632
A103	Santos SR, Macedo MLC, Maciel TR, Souza GBG, Almeida LD, Gadig OBF, Vianna M	A tale that never loses in the telling: Considerations for the shifting ethnobaseline based on artisanal fisher records from the southwestern Atlantic	2022	Ethnobiology and Conservation	10.15451/ec2022-01-11.03-1-20
A104	Nazareth E, D'Souza E, Arthur R, Jabado RW	Distribution of the Critically Endangered Giant Guitarfish ( <i>Glaucostegus typus</i> ) based on Local Ecological Knowledge in the Andaman Islands, India.	2022	Ocean and Coastal Management	10.1016/j.ocecoaman.2022.106075

Continues...

Code	Author(s)	Title	Year	Journal	DOI
A105	Leeney RH, Quayson E	Short note: An assessment of the status of sawfishes and of guitarfish landings in artisanal fisheries in Ghana	2022	Aquatic Conservation: Marine and Freshwater Ecosystems	<a href="https://doi.org/10.1002/aqc.3824">10.1002/aqc.3824</a>
A106	Haque AB, Cavanagh RD, Spaet JLY	Fishers' tales-Impact of artisanal fisheries on threatened sharks and rays in the Bay of Bengal, Bangladesh	2022	Conservation Science and Practice	<a href="https://doi.org/10.1111/csp2.12704">10.1111/csp2.12704</a>
A107	Sekey W, Obirikorang KA, Alimo TA, Soku M, Acquah B, Gyampoh BA, Adjei-Boateng D, Asare-Ansah O, Ashiagbor G, Kassah JE	Evaluation of the shark fisheries along the Coastline of Ghana, West Africa	2022	Regional Studies in Marine Science	<a href="https://doi.org/10.1016/j.rsma.2022.102434">10.1016/j.rsma.2022.102434</a>
A108	Espino F, Gonzalez JA, Bosch NE, Otero-Ferrer FJ, Haroun R, Tuya F	Distribution and population structure of the smooth-hound shark, <i>Mustelus mustelus</i> (Linnaeus, 1758), across an oceanic archipelago: Combining several data sources to promote conservation	2022	Ecology and Evolution	<a href="https://doi.org/10.1002/ece3.9098">10.1002/ece3.9098</a>
A109	Barker J, Davies J, Goralczyk M, Patel S, O'Connor J, Evans J, Sharp R, Gollock M, Wood FR, Rosindell J, Bartlett C, Garner BJ, Jones D, Quigley D, Wray B	The distribution, ecology and predicted habitat use of the Critically Endangered angelshark ( <i>Squatina squatina</i> ) in coastal waters of Wales and the central Irish Sea	2022	Journal of Fish Biology	<a href="https://doi.org/10.1111/jfb.15133">10.1111/jfb.15133</a>

Continues...

Code	Author(s)	Title	Year	Journal	DOI
A110	Caceres C, Kiszka JJ, Luna-Acosta A, Herrera H, Zarza E, Heithaus MR	Predatory fish exploitation and relative abundance in a data-poor region from the Caribbean coast of Colombia, inferred from artisanal fishery interview surveys and baited remote underwater video systems	2022	Aquatic Conservation: Marine and Freshwater Ecosystems	<a href="https://doi.org/10.1002/aqc.3853">10.1002/aqc.3853</a>
A111	Medeiros MC, Pinto AS, Santos DR, Martel G, Lopes SD, Mourao JD	Folk taxonomy and scientific nomenclature: Working together for conservation of fishery resources in Brazil	2022	Journal For Nature Conservation	<a href="https://doi.org/10.1016/j.jnc.2022.126214">10.1016/j.jnc.2022.126214</a>
A112	Guttridge TL, Carroll K, Guttridge AE, Matich P	Local ecological knowledge from Andros Island, The Bahamas, reveals new insights on the distribution and use of the Critically Endangered smalltooth sawfish, <i>Pristis pectinata</i>	2022	Aquatic Conservation: Marine and Freshwater Ecosystems	<a href="https://doi.org/10.1002/aqc.3867">10.1002/aqc.3867</a>
A113	Pagel CD, Lück M	#Wildlifselfies: insights into the ocular consumption of marine wildlife	2022	Tourism Recreation Research	<a href="https://doi.org/10.1080/02508281.2022.2026151">10.1080/02508281.2022.2026151</a>
A114	Robinson D, Newman SP, Whittingham MJ, Francksen RM, Adam MS, Stead SM	Fisher–shark interactions: A loss of support for the Maldives shark sanctuary from reef fishers whose livelihoods are affected by shark depredation	2022	Conservation Letters	<a href="https://doi.org/10.1111/conl.12912">10.1111/conl.12912</a>
A115	Choy CPP, Jabado RW, Clark-Shen N, Huang D, Choo MY, Rao M	Unraveling the trade in wedgefishes and giant guitarfishes in Singapore	2022	Marine Policy	<a href="https://doi.org/10.1016/j.marpol.2021.104914">10.1016/j.marpol.2021.104914</a>
A116	Blanco-Parra MP, Sandoval-Laurrabaquio-Alvarado N, Díaz-Jaimes P, Niño-Torres CA	Evidence of a nursery area for bull shark, <i>Carcharhinus leucas</i> (Müller y Henle, 1839) in the Mesoamerican Reef System region	2022	Environmental Biology of Fishes	<a href="https://doi.org/10.1007/s10641-022-01338-1">10.1007/s10641-022-01338-1</a>

Continues...

Code	Author(s)	Title	Year	Journal	DOI
A117	Blanco-Parra MP, Gasca AA, Rincón CAR, Martínez NHG, Niño-Torres CA	Citizen Science as a Tool to Get Baseline Ecological and Biological Data on Sharks and Rays in a Data-Poor Region	2022	Sustainability (Switzerland)	<a href="https://doi.org/10.3390/su14116490">10.3390/su14116490</a>
A118	Papageorgiou M, Hadjioannou L, Jimenez C, Georgiou A, Petrou A	Understanding the Interactions Between Cetaceans and Other Megafauna With the Albacore Tuna Fishery: A Case Study From the Cyprus' Pelagic Long-line Fishery	2022	Frontiers in Marine Science	<a href="https://doi.org/10.3389/fmars.2022.868464">10.3389/fmars.2022.868464</a>
A119	Katzer RJ, Schultz C, Pham K, Sotelo MA	The Natural History of Stingray Injuries	2022	Prehospital and Disaster Medicine	<a href="https://doi.org/10.1017/S1049023X22000565">10.1017/S1049023X22000565</a>
A120	Seidu I, Cabada-Blanco F, Brobbey LK, Asiedu B, Barnes P, Seidu M, Dulvy NK	“Every fish in the sea is meat and so are guitarfishes”: Socio-economic drivers of a guitarfish fishery in Ghana	2022	Marine Policy	<a href="https://doi.org/10.1016/j.marpol.2022.105159">10.1016/j.marpol.2022.105159</a>